

CHARRETTE REPORT



MAY 6, 2017
CONGRESS FOR NEW URBANISM (CNU) EVENT
HOSTED BY LID I-5 + THE FREEWAY PARK ASSOCIATION



The May 6th Design Charrette was an event hosted by Lid I-5 in partnership with the Freeway Park Association for the 2017 Congress for New Urbanism Conference in Seattle. Experts in their field from around the country joined forces with local Seattle representatives to tackle the design and implementation of a lid over Interstate 5.

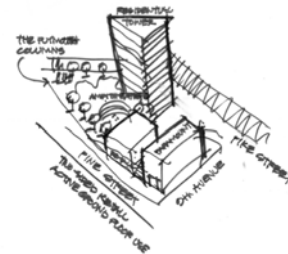
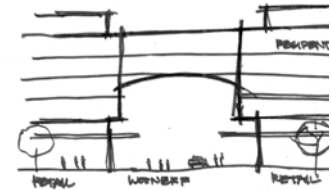
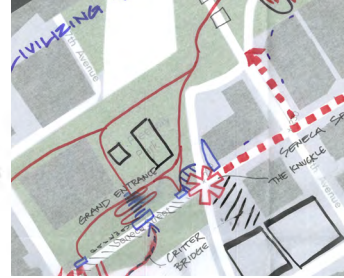
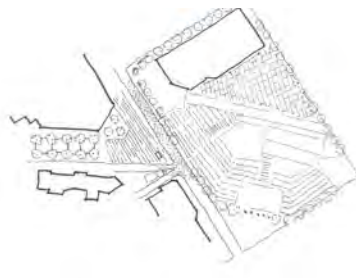
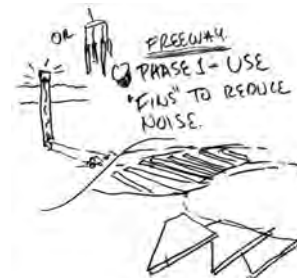
The group was divided into groups of eight people and given a designated block or connection to tackle. Given only four hours to complete the event, we first had a swift walk near the interstate and through the Freeway Park then met at The Summit in Capitol Hill. After witnessing the current state of the freeway scar first hand, the teams were ready to put their heads together and create sketches and renderings of their design concepts.

Taking full advantage of the expert knowledge of team members - ranging from landscape architects to urban planners to Seattle city council members - the teams solidified their concepts in time to give brief presentations to the entire group.

We appreciate all of those who attended and are thrilled with the results, as well as the momentum and excitement that was felt across the room!

- Lid i-5 Steering Committee





THE PROCESS:

The event was broken down into two parts:

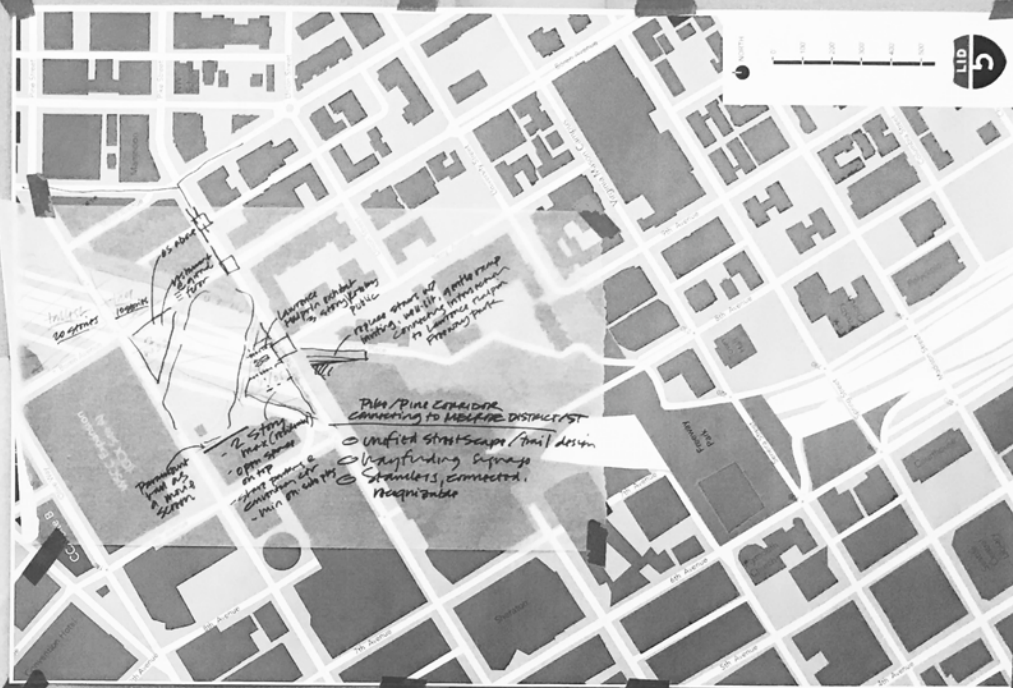
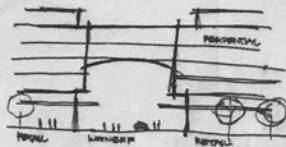
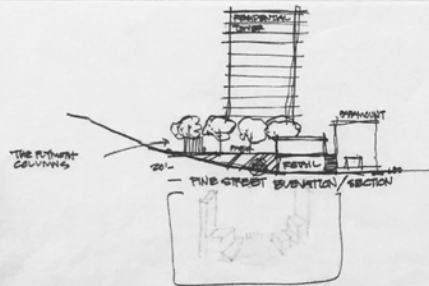
- (1) a walking tour through Freeway Park and the adjacent areas affected by the I-5 scar and
- (2) a design charrette to address the challenges of creating a lid at specific areas selected along the walking tour and generate ideas for extending the Freeway Park.

With very limited time to complete the event and propose concepts, the schedule was as follows:

- 9:00 AM - Meet at Benaroya Hall
- 9:05 AM - Depart Benaroya Hall and begin walking tour
- 9:50 AM - Complete walking tour and arrive at The Summit for the charrette
- 12:00 AM - Charrette concludes

On the following pages, you will see the many ideas generated by the two-hour charrette. This booklet is divided by “team”. Each team consisted of members of the CNU event from around the country, local Seattle officials from various city and community departments, and a member of the Lid i-5 Steering Committee.

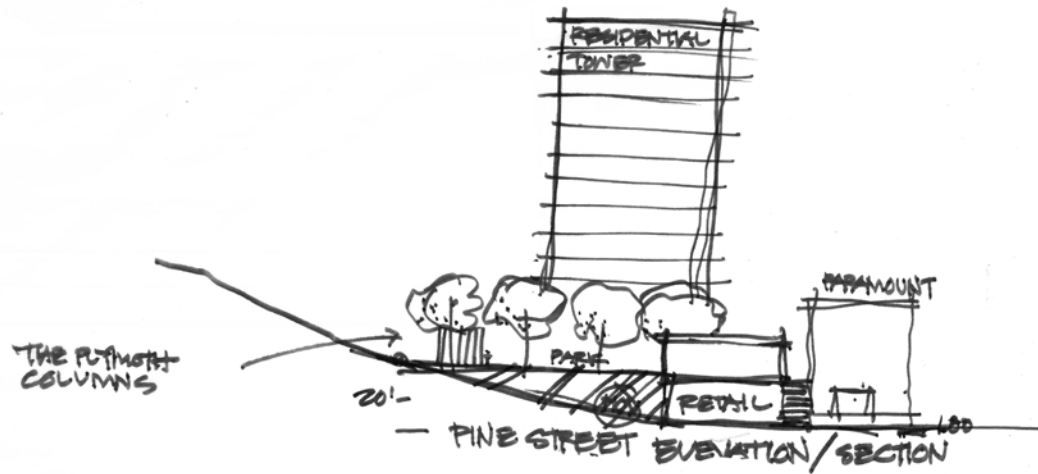
-



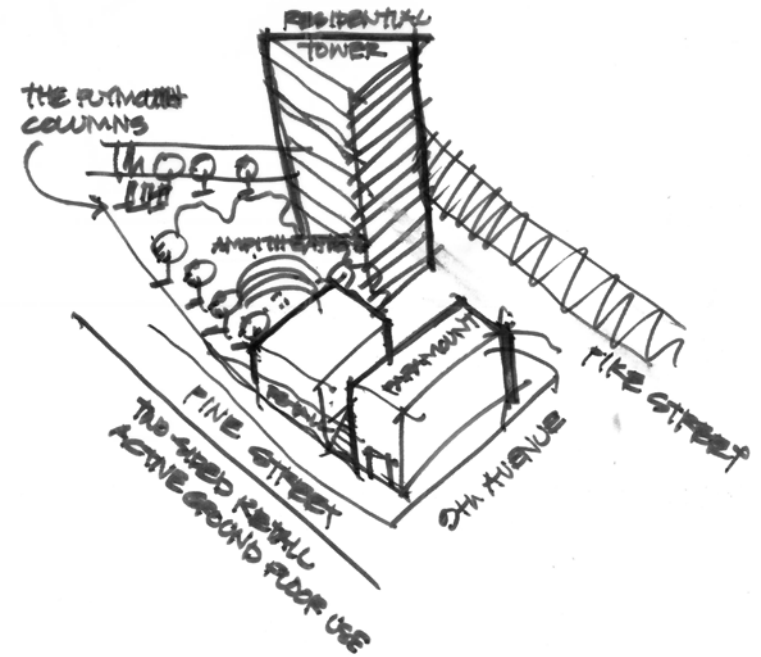
PIKE/ PINE CONNECTION

TEAM A

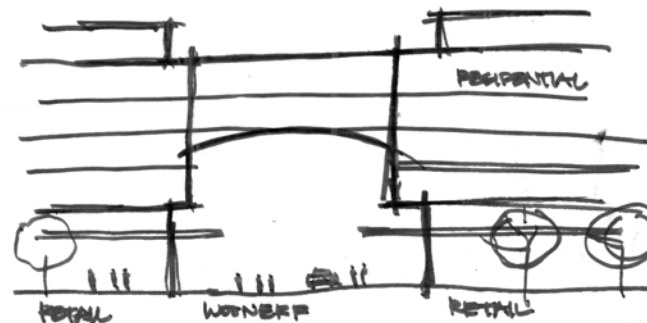
PIKE/ PINE CONNECTION



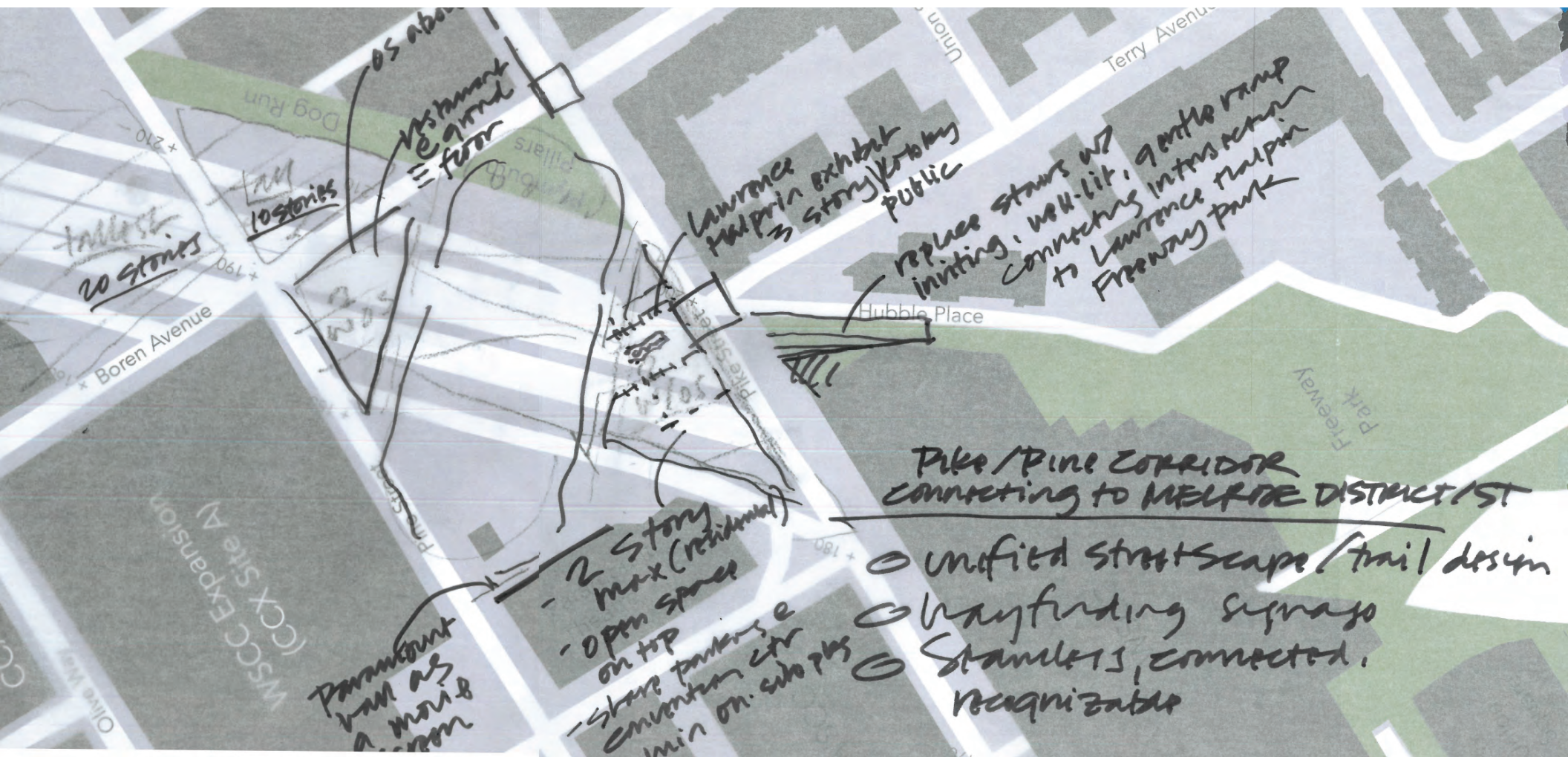
A-1: Section evaluating the slope between Capitol Hill and Downtown Seattle.



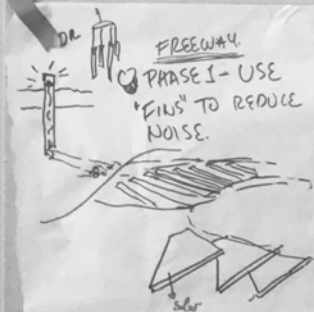
A-2: Perspective of a lid between Pike and Pin Streets.



A-3: Elevation of interaction between retail and the lid.



Focused on the Pike/Pine portion of the lid, Team A worked to: unify the streetscapes and trails, create better wayfinding signals, and make entrances more recognizable and connected. The team took into account the height of existing buildings surrounding the area to best optimize views from the proposed lid, as well as optimizing ground floor retail. The Melrose Promenade was a focus of their talks, as well as the connection between the Plymouth Pillars and Convention Center.



INTEGRATE

- ALL BUILDINGS HAVE LED LIGHTS - COLOR LIGHTS.
- ALL BUILDINGS HAVE "BALCONIES" FACING THE PARK

TO THE BALCONIES
ORDER FROM TO PARK

OTHER USES

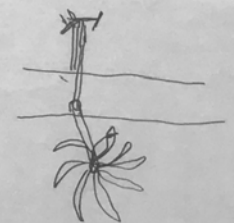
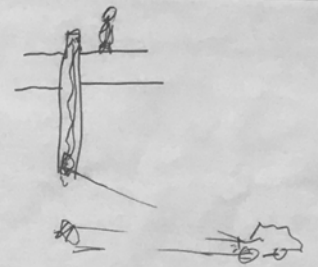
- "TROLLEY" COFFEE SHOP
- COLORFUL CHAIRS + TABLES
- PING PONG, +/OR OTHER GAMES

CAFE

SAFETY!

- NEW RES. BLDGS CONNECT TO PARK.
- MORE EYES ON THE PARK.

RES. PARKING
PARK



TEAM B

SOUTH FREEWAY PARK CONNECTION

TEAM B

SOUTH FREEWAY PARK CONNECTION

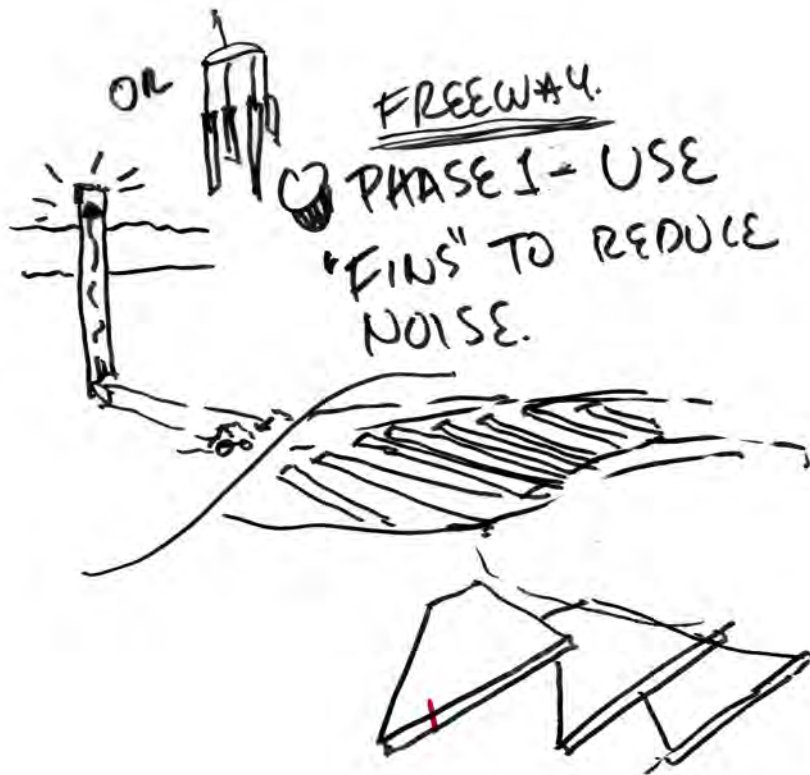


EXHIBIT B-1



EXHIBIT B-2

After walking through South Freeway Park and examining the existing pedestrian connections, Team B chose to focus specifically on integration and safety. As seen in Exhibits B-1 through B-4 above, ideas of integrating lights and increasing pedestrian uses were a few of the proposed ideas.

OTHER USES.

☉ "TROLLEY" COFFEE SHOP

☉ COLORFUL CHAIRS + TABLES.

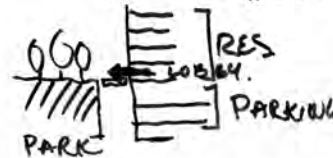
☉ PING PONG, +/OR OTHER GAMES



EXHIBIT B-3

SAFETY !

☉ NEW RES. BLDGS CONNECT TO PARK.



☉ MORE EYES ON THE PARK.

EXHIBIT B-4

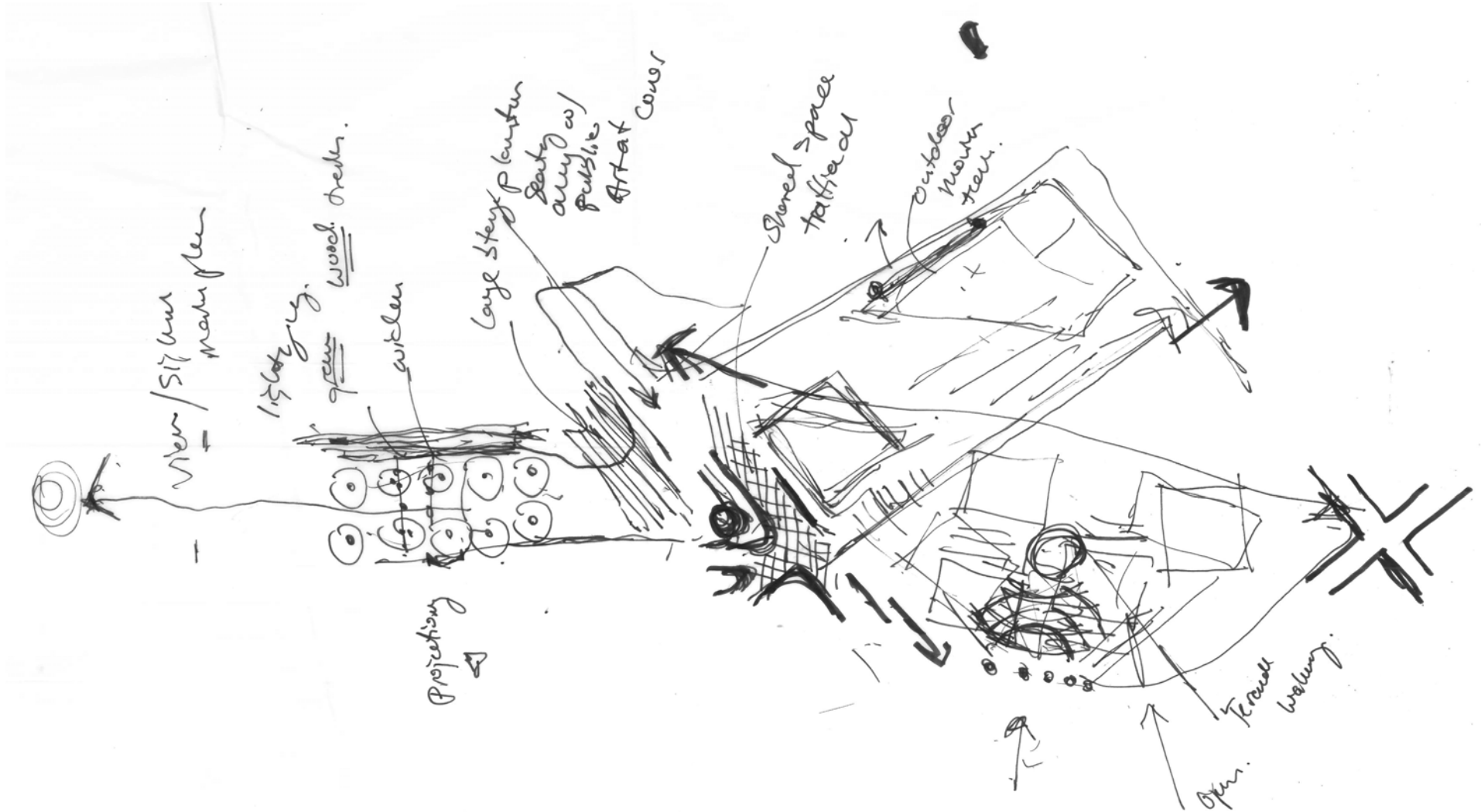


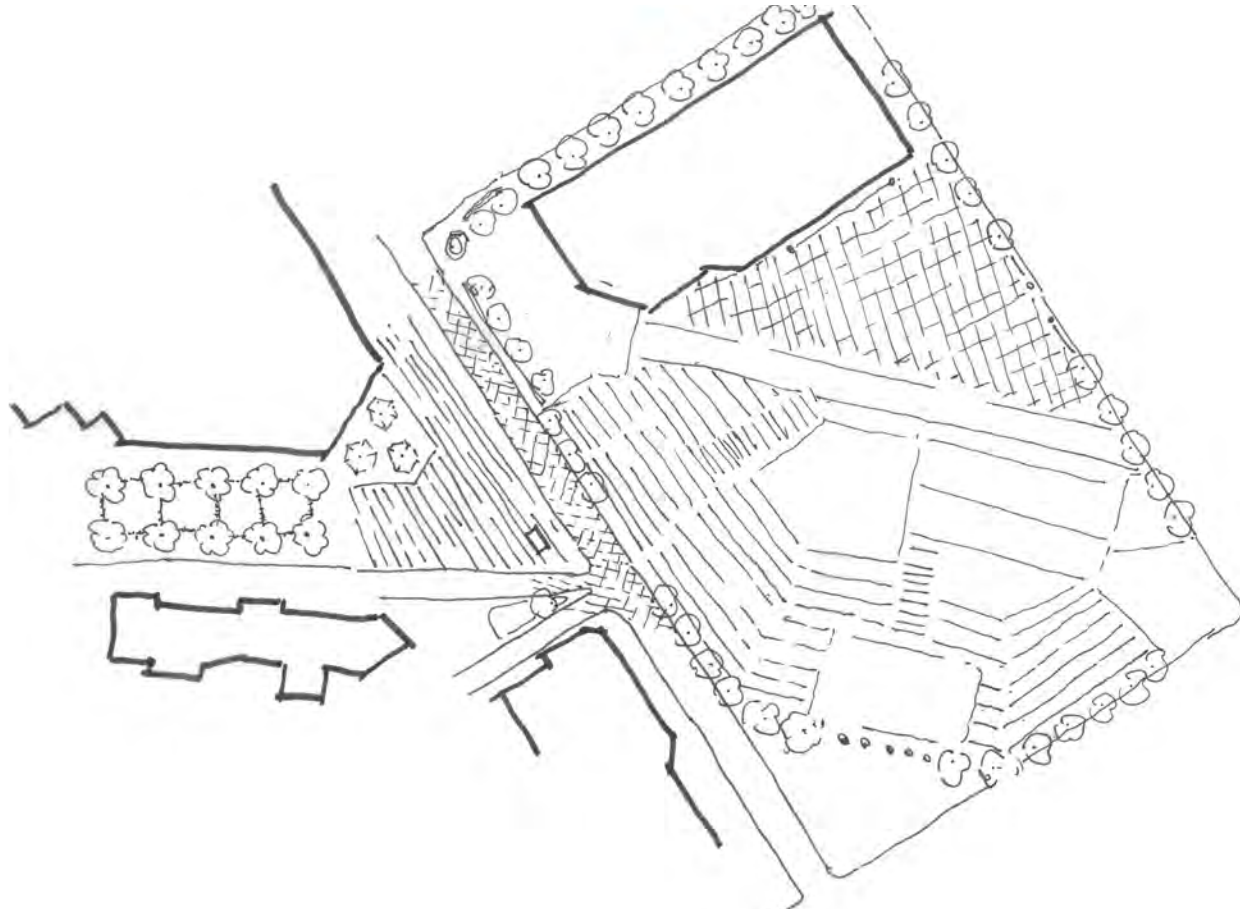
TEAM C

NORTH FREEWAY PARK/ PIKE STREET LID CONNECTION

TEAM C

NORTH FREEWAY PARK/ PIKE STREET LID CONNECTION





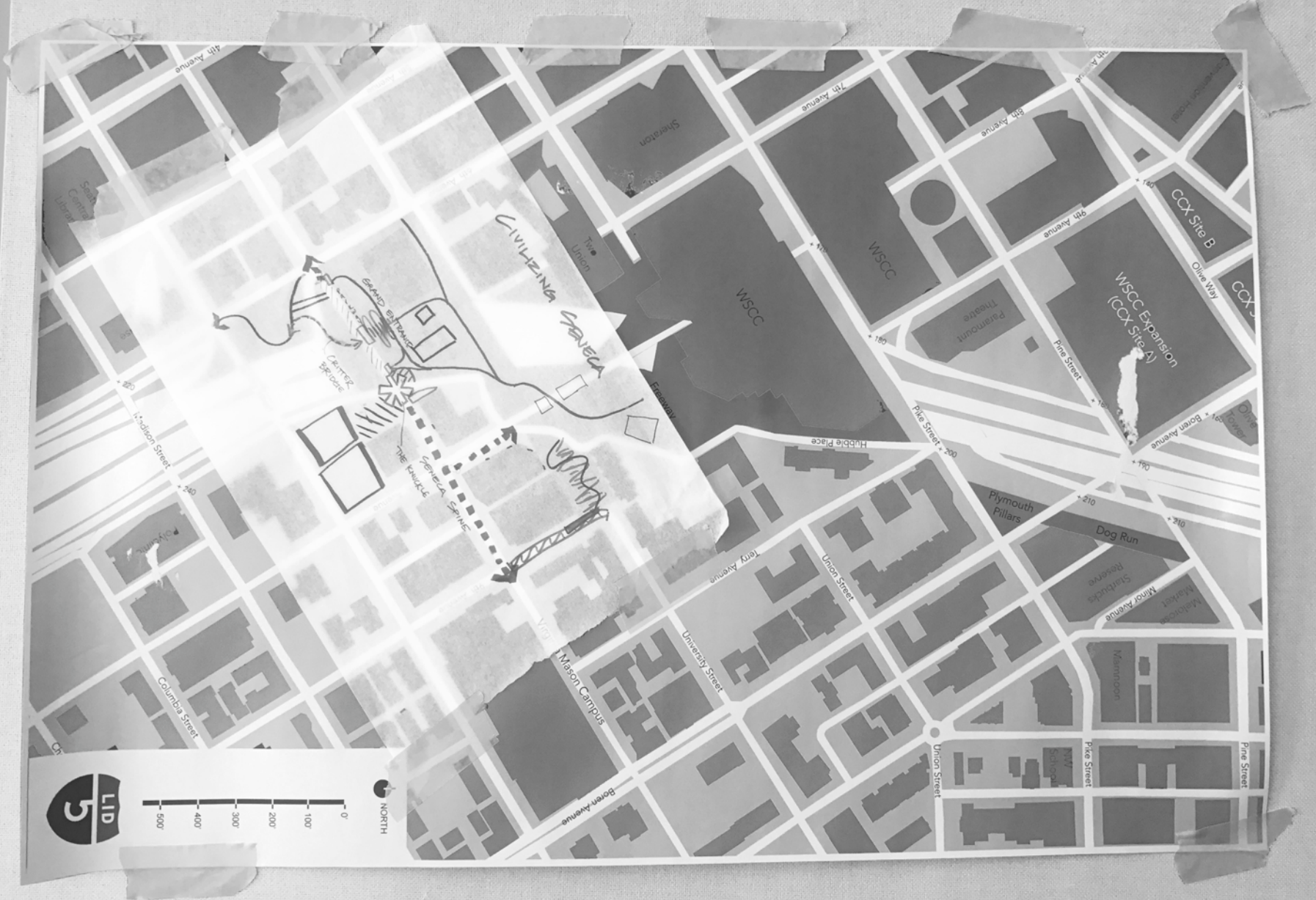
After analyzing the connection between the North Freeway Park entrance and proposed I-5 lid, Team C developed sketches for a possible design between Pike and Pine Street. As seen above, their design consisted of a terraced walkway down from Plymouth Pillars Park, an exterior movie theater outside of the existing Paramount Theater, and an enlarged pathway at the existing stairway entrance to Freeway Park.

TEAM D
PIKE/ PINE LID



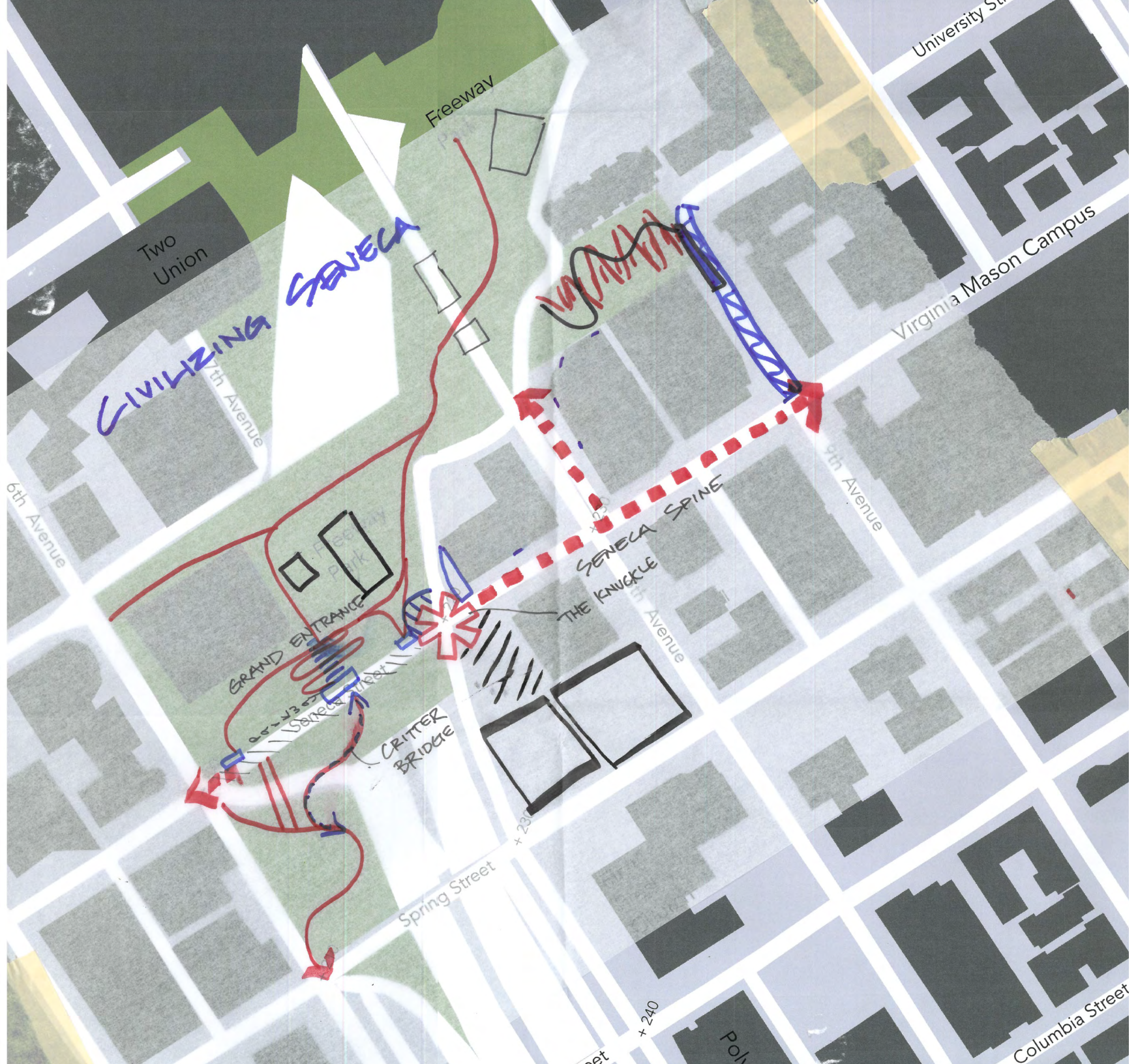
Team D focused on the challenge of creating more accessible and pleasant connections to Freeway Park from Pike Street, while also connecting the east neighborhood to Downtown.

The team suggested creating urban pedestrian streets with step down platforms from Plymouth Pillars Park. Other ideas included capturing water from the lid in artistic ways, renewable energy, and child-friendly parks.



TEAM E

SENECA STREET CONNECTION



Team E focused further towards the south at the Seneca Street connection to the existing Freeway Park. Due to the existing condition of unclear pedestrian access, the group focused on ideas to enhance visibility and demarcation. A primary element of their design was to take advantage of the existing strip of freeway lid that is inaccessible (as seen as south of Seneca Street in the rendering on page 21).





Thank you to all who attended!