

LID I-5 | **NORTH TEAM I**  
COLLAB #2 – 6/5/2018



I-5 CONSTRUCTION AT LAKEVIEW BLVD



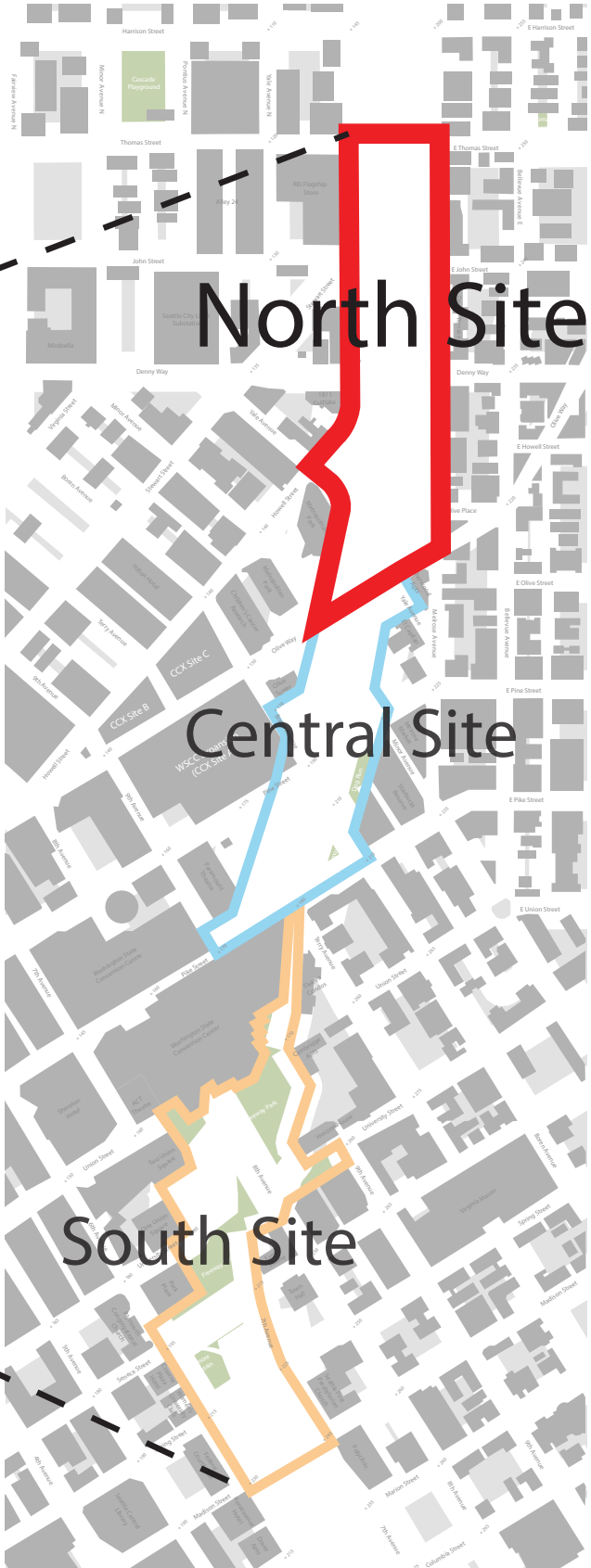
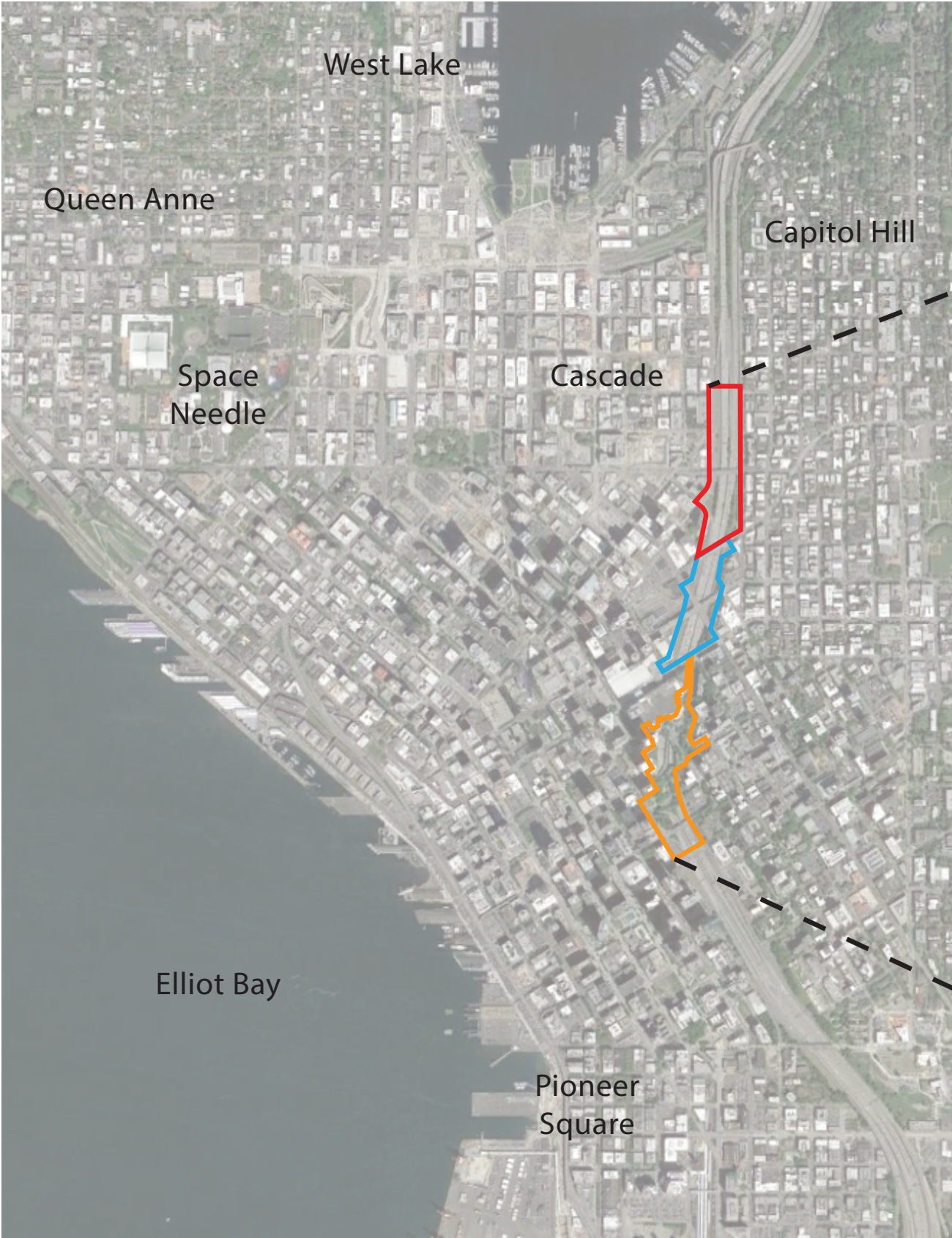
OLIVE PLACE BRIDGE



DENNY WAY BRIDGE

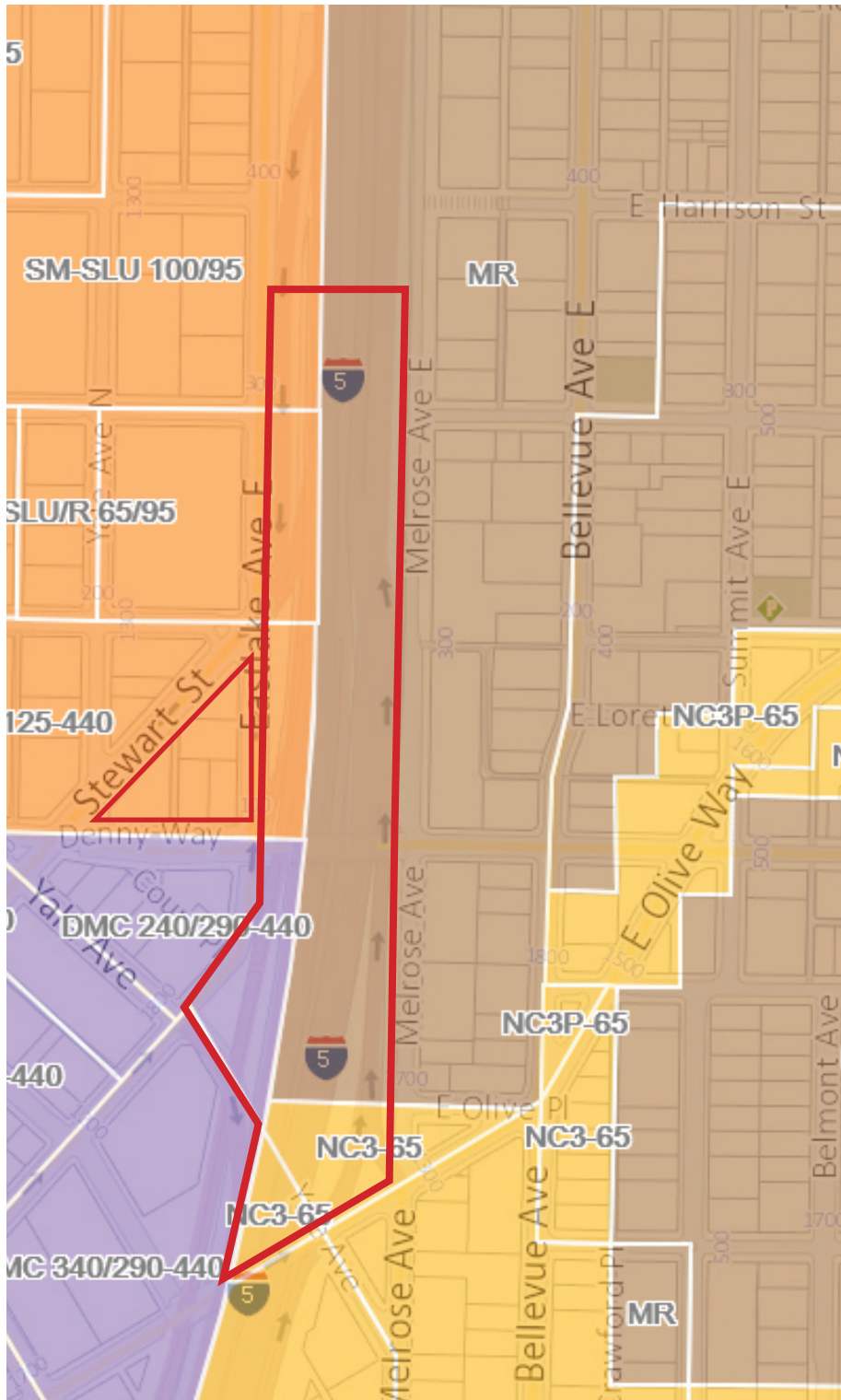


# SITE PLAN | URBAN CONTEXT

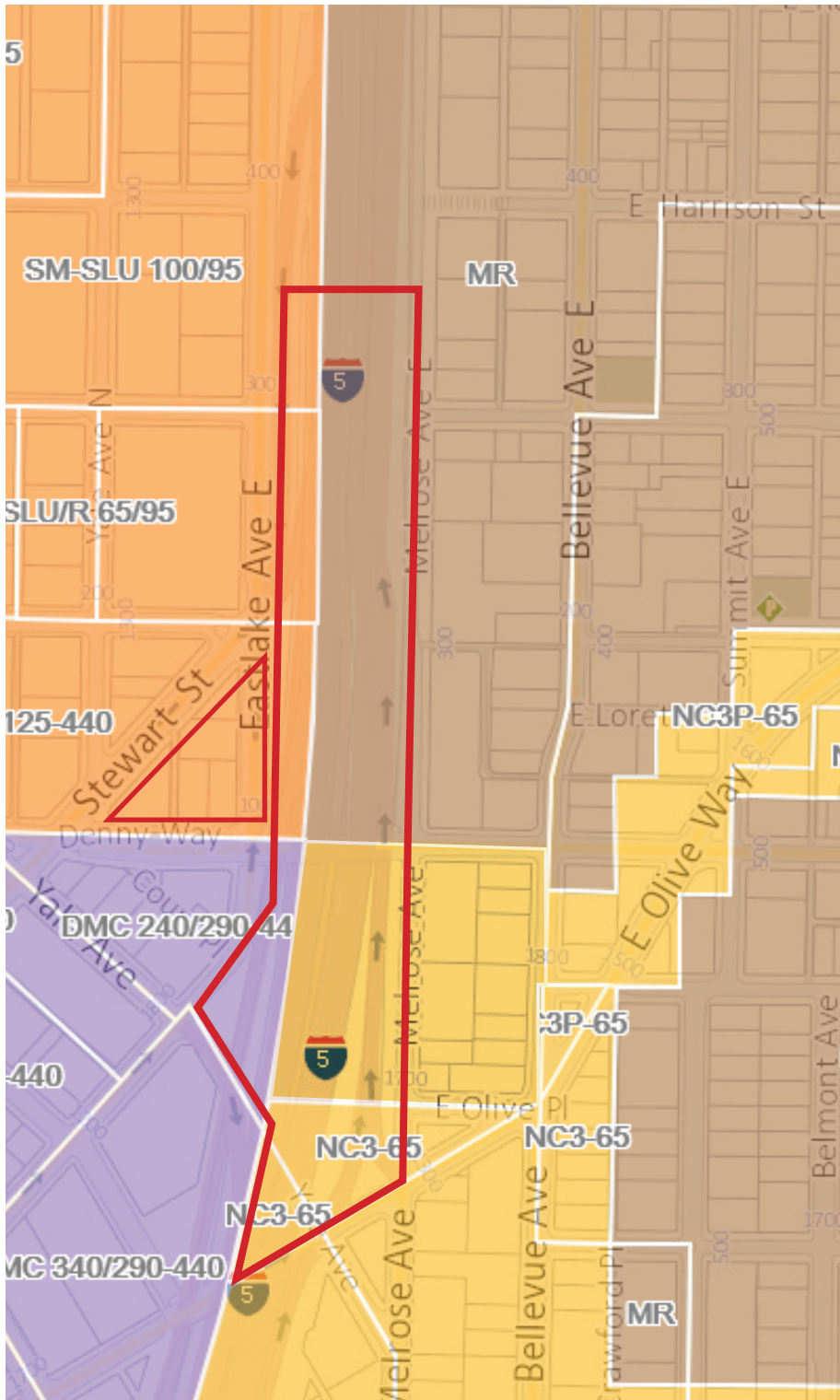




# ZONING | EXISTING VS. PROPOSED

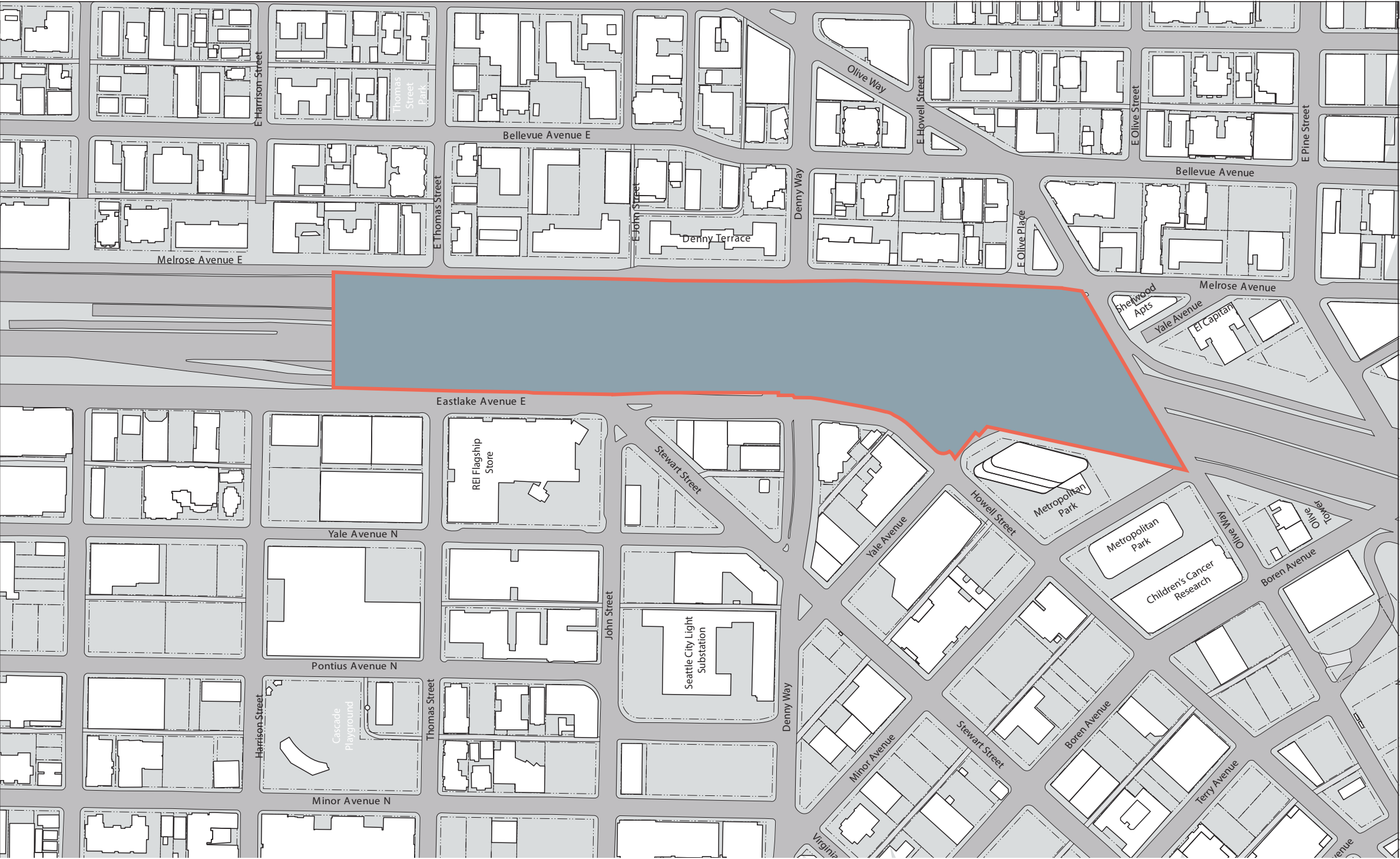


EXISTING ZONING



PROPOSED ZONING

# SITE PLAN | DEVELOPMENT BOUNDARY

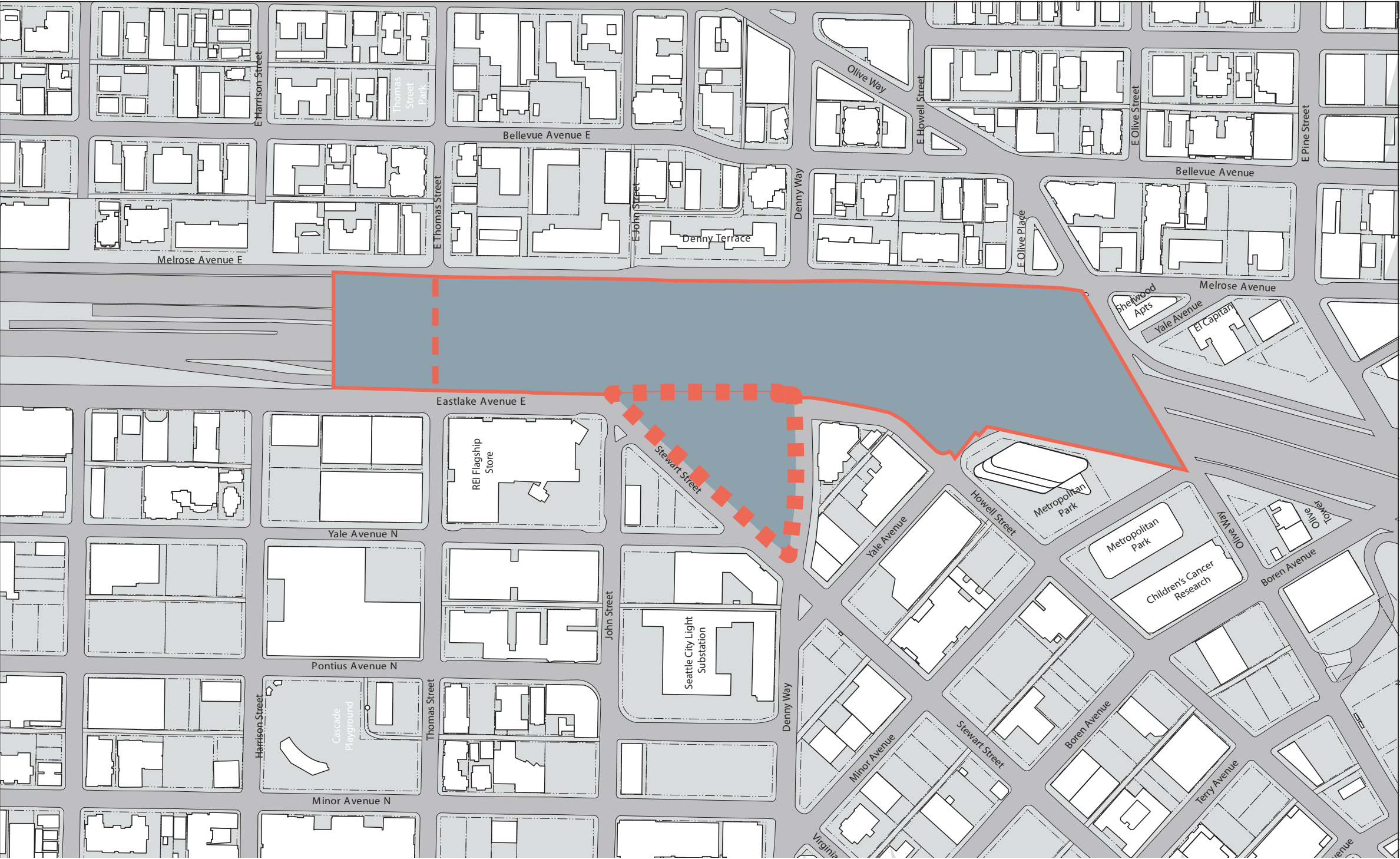


SCALE: 1" = 150'





# SITE PLAN | LAND GRAB

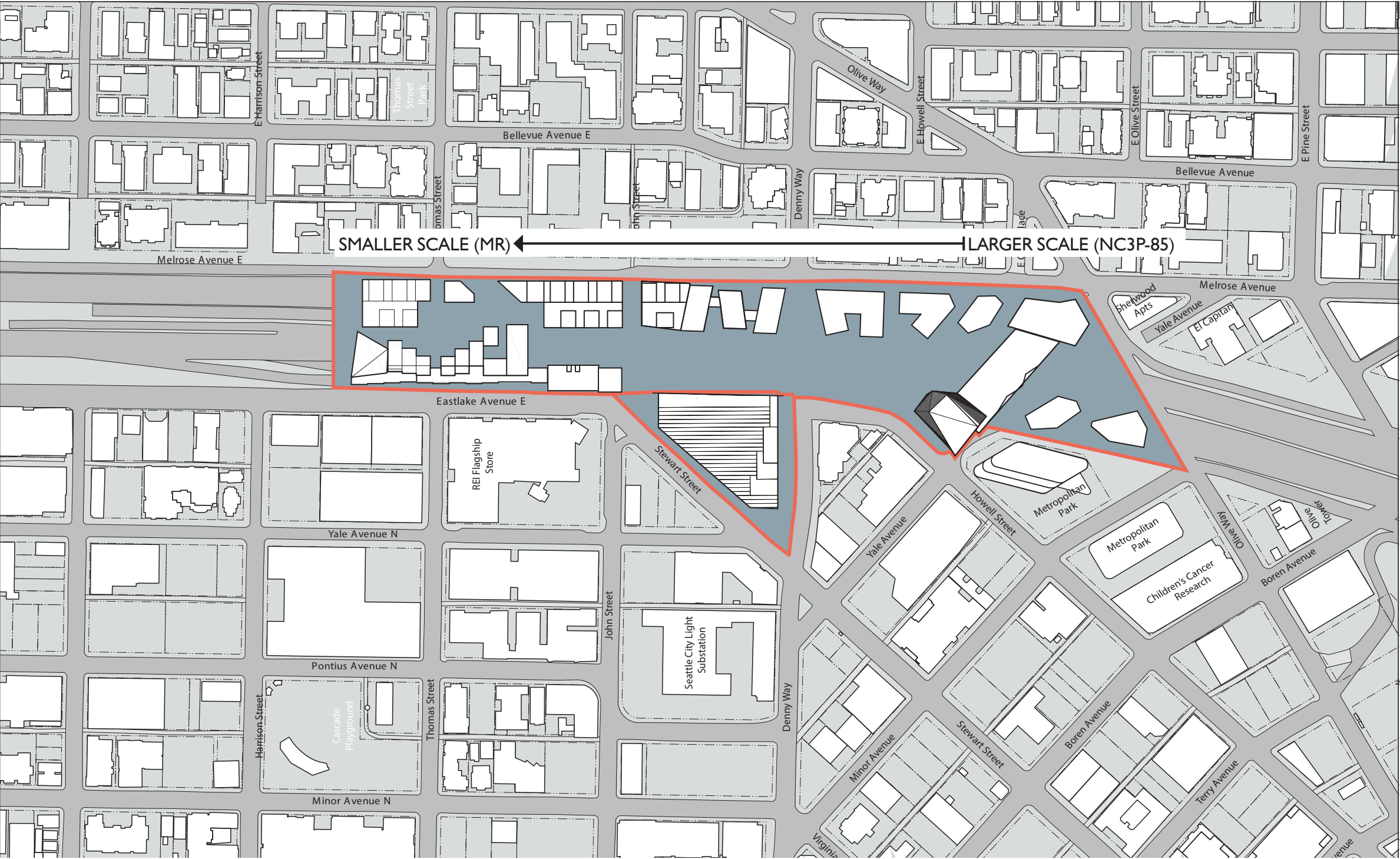


SCALE: 1" = 150'





# SITE PLAN | MASSING & SCALE



SCALE: 1" = 150'

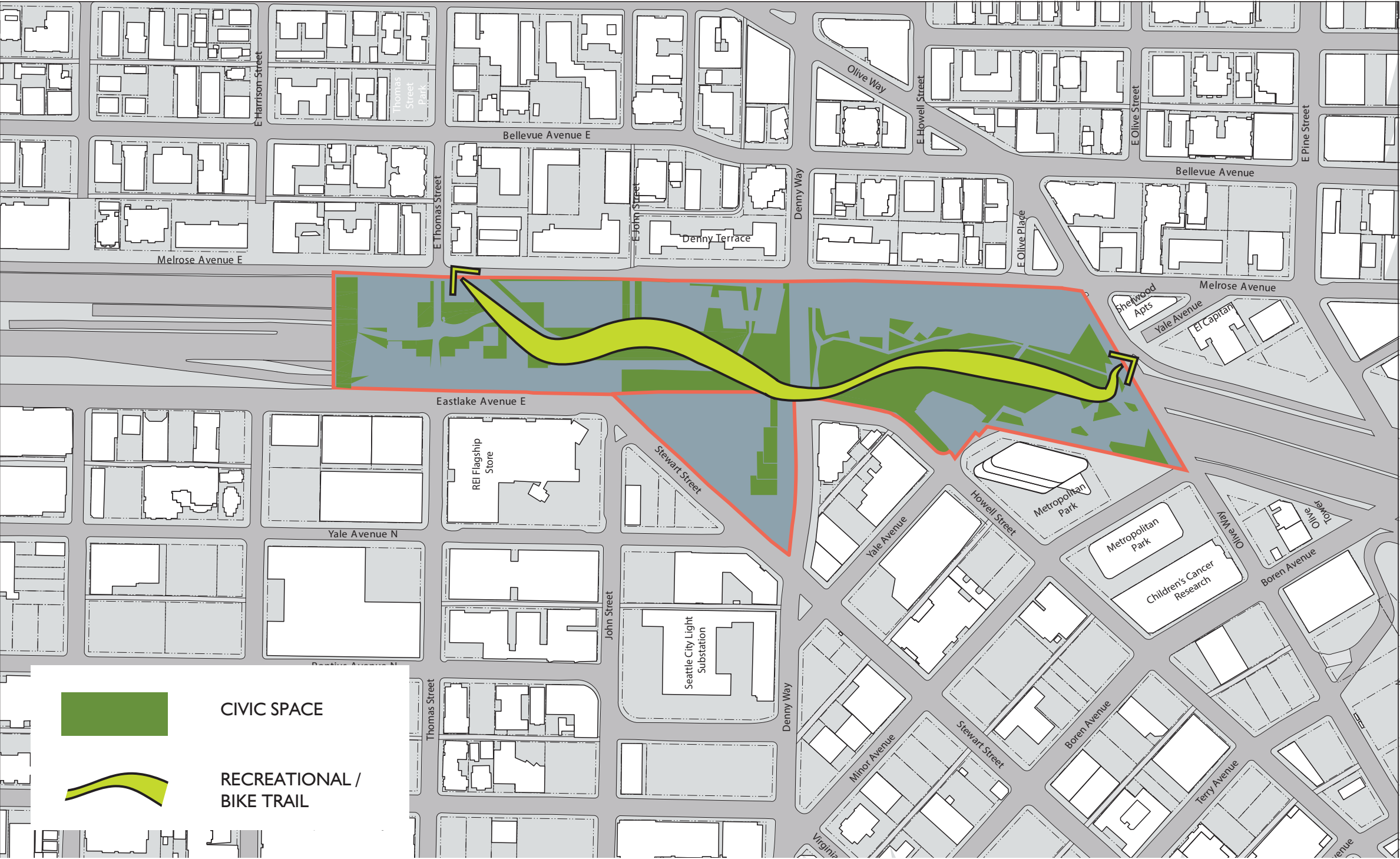








# SITE PLAN | RECREATIONAL TRAIL

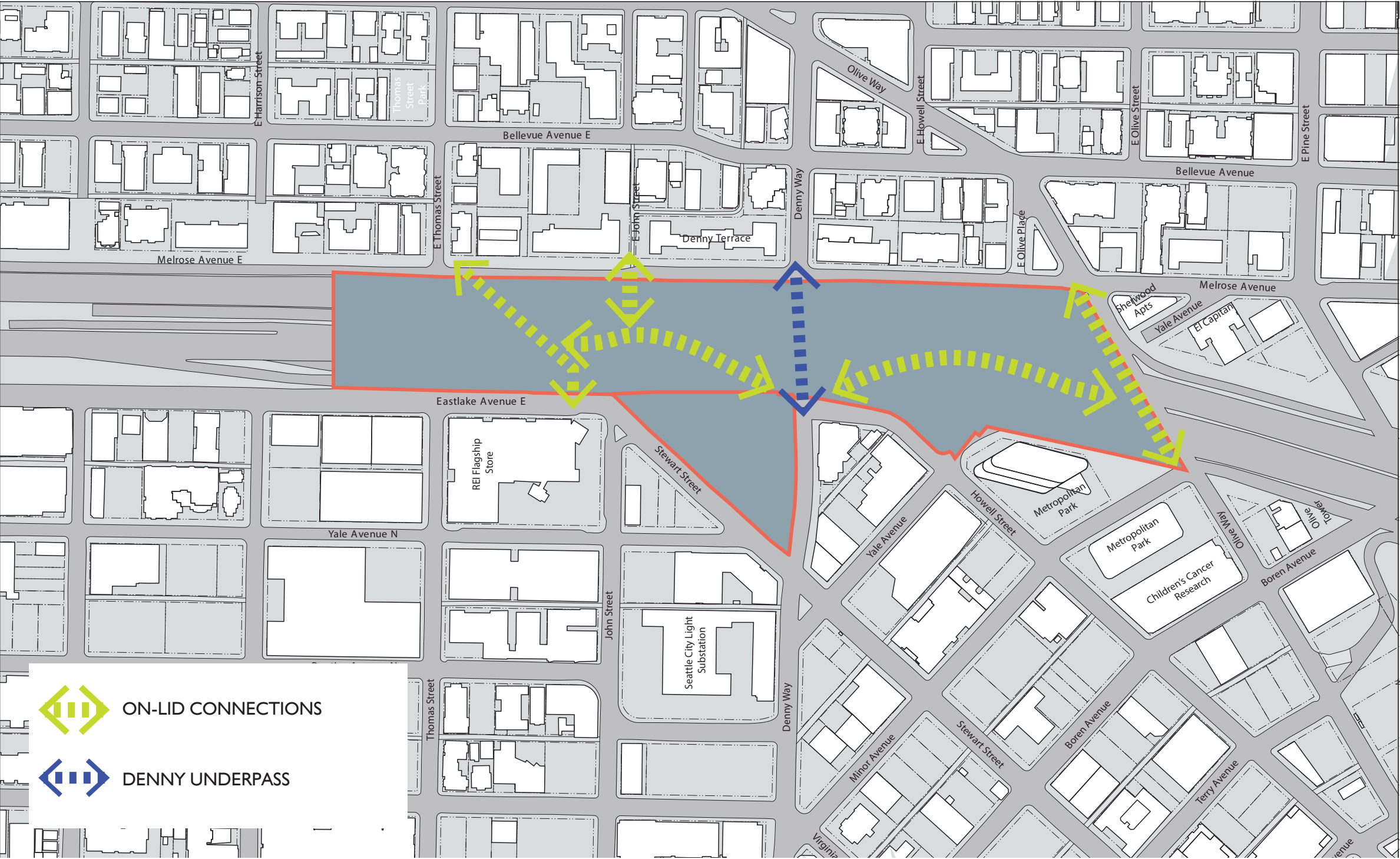


SCALE: 1" = 150'





# SITE PLAN | THROUGH SITE CONNECTIONS

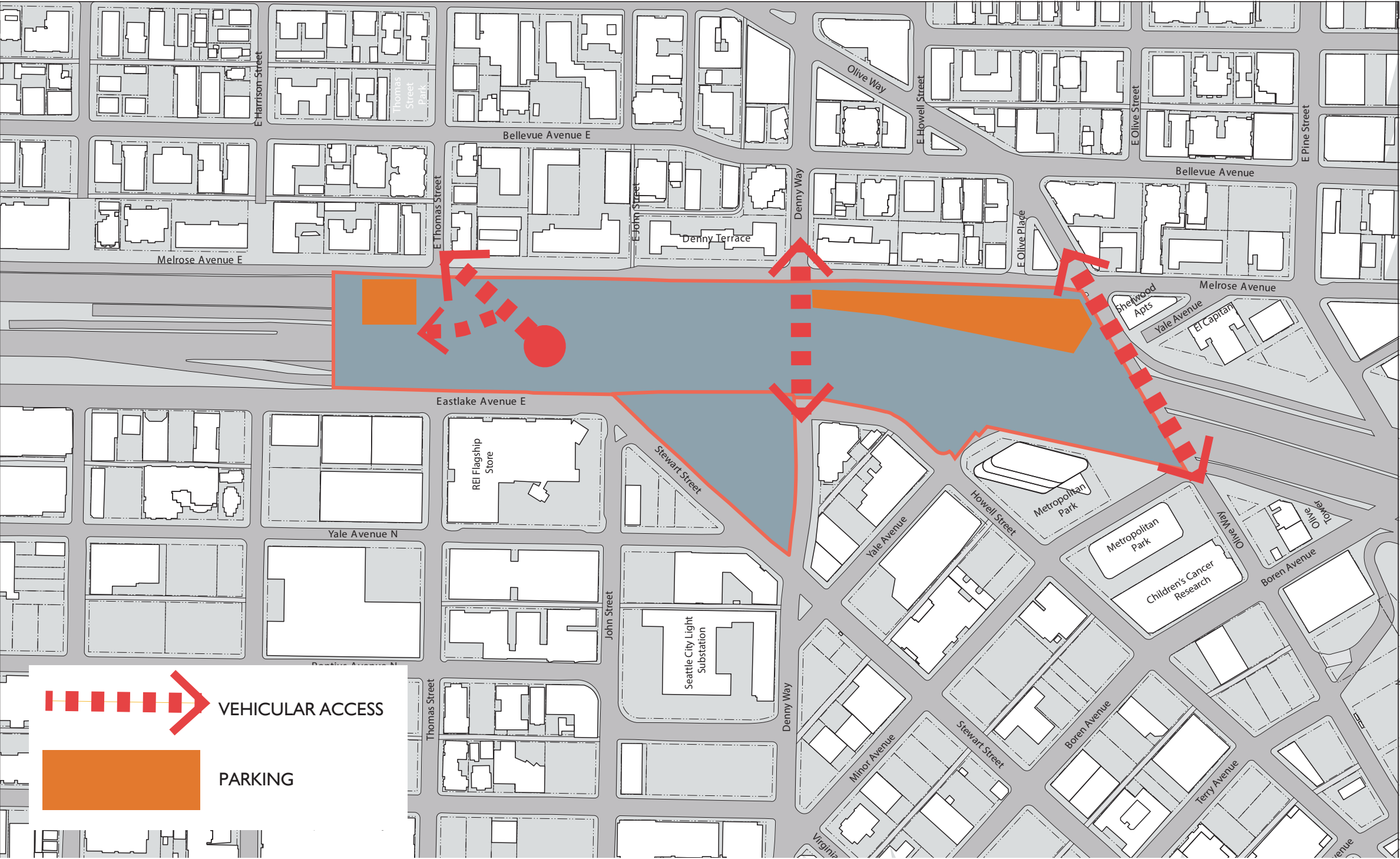


SCALE: 1" = 150'





# SITE PLAN | VEHICULAR PARKING

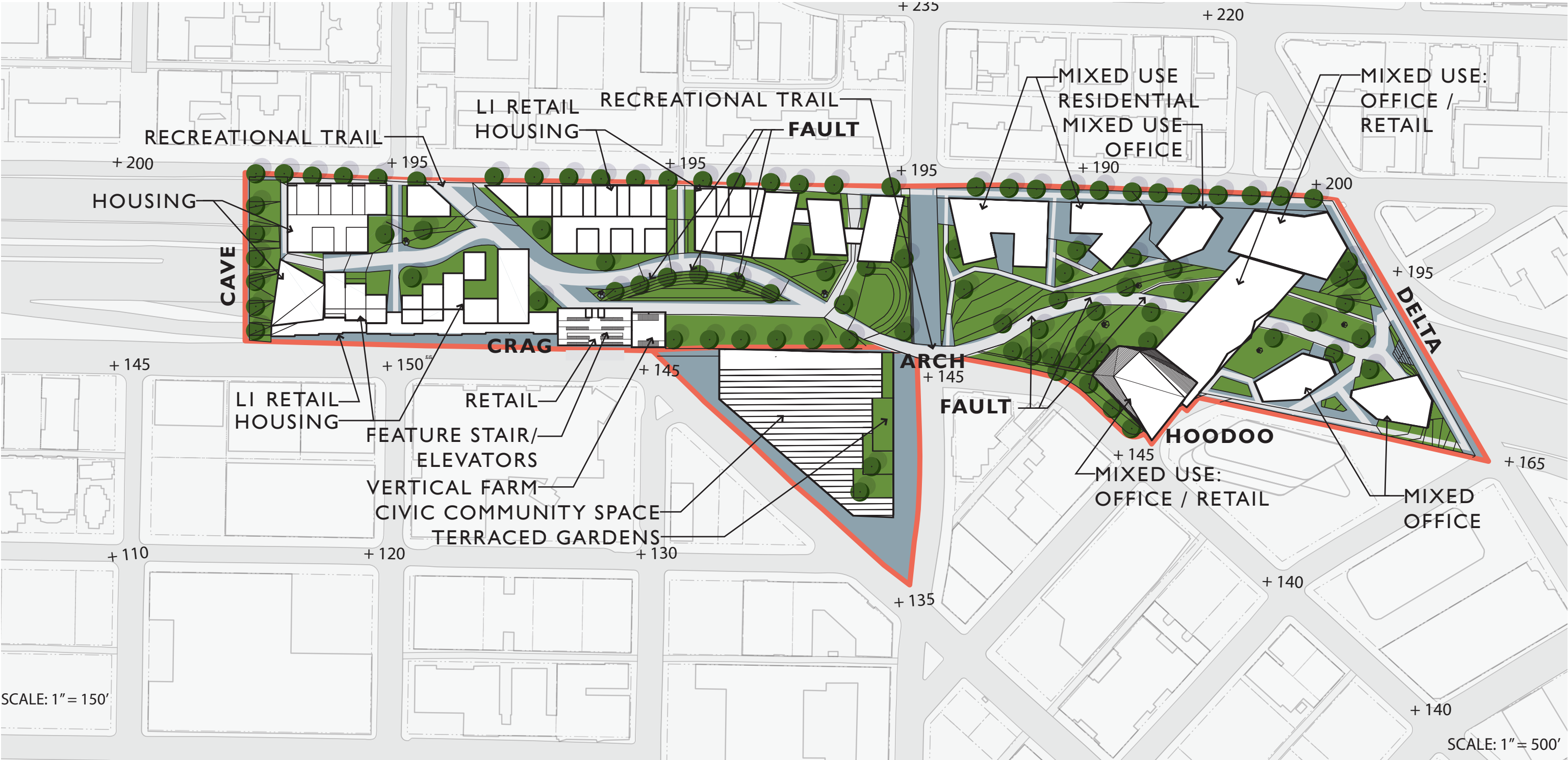


SCALE: 1" = 150'



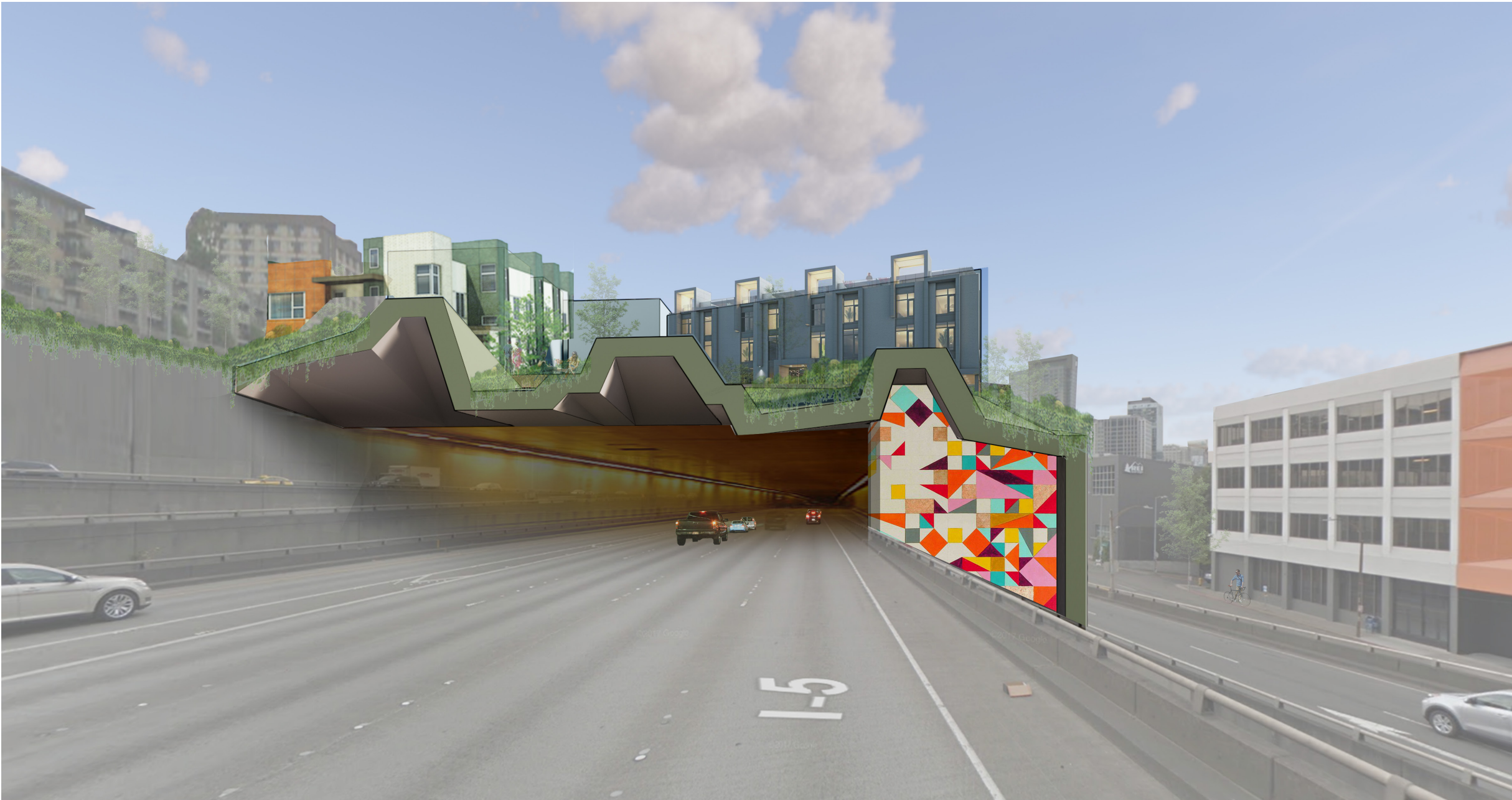


SITE PLAN | **OVERALL**





# I-5 LID PORTAL | THE CAVE



**CAVE** /kāv/:

A cave is a hollow place in the ground, specifically a natural underground space large enough for a human to enter.

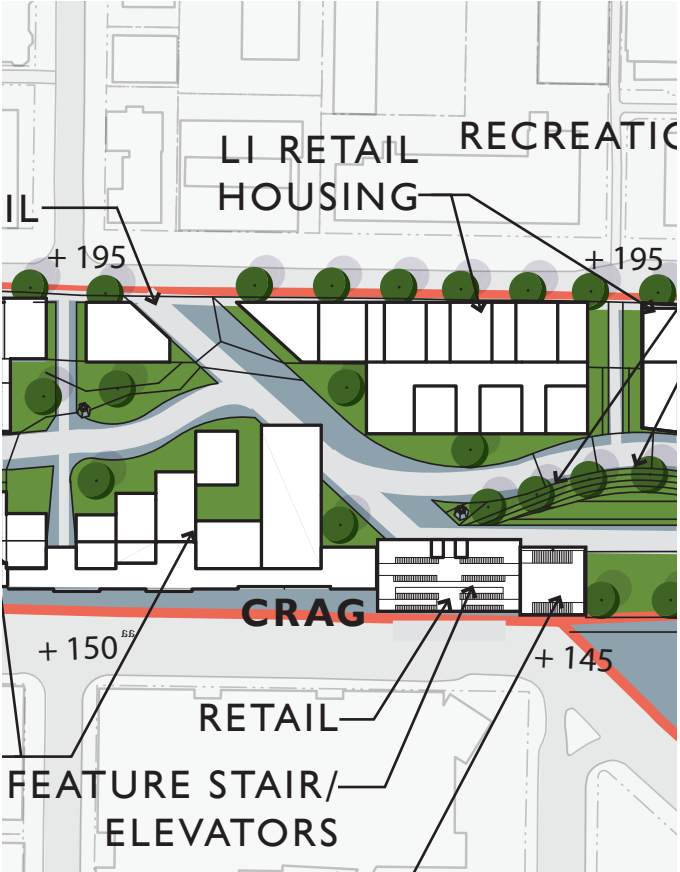
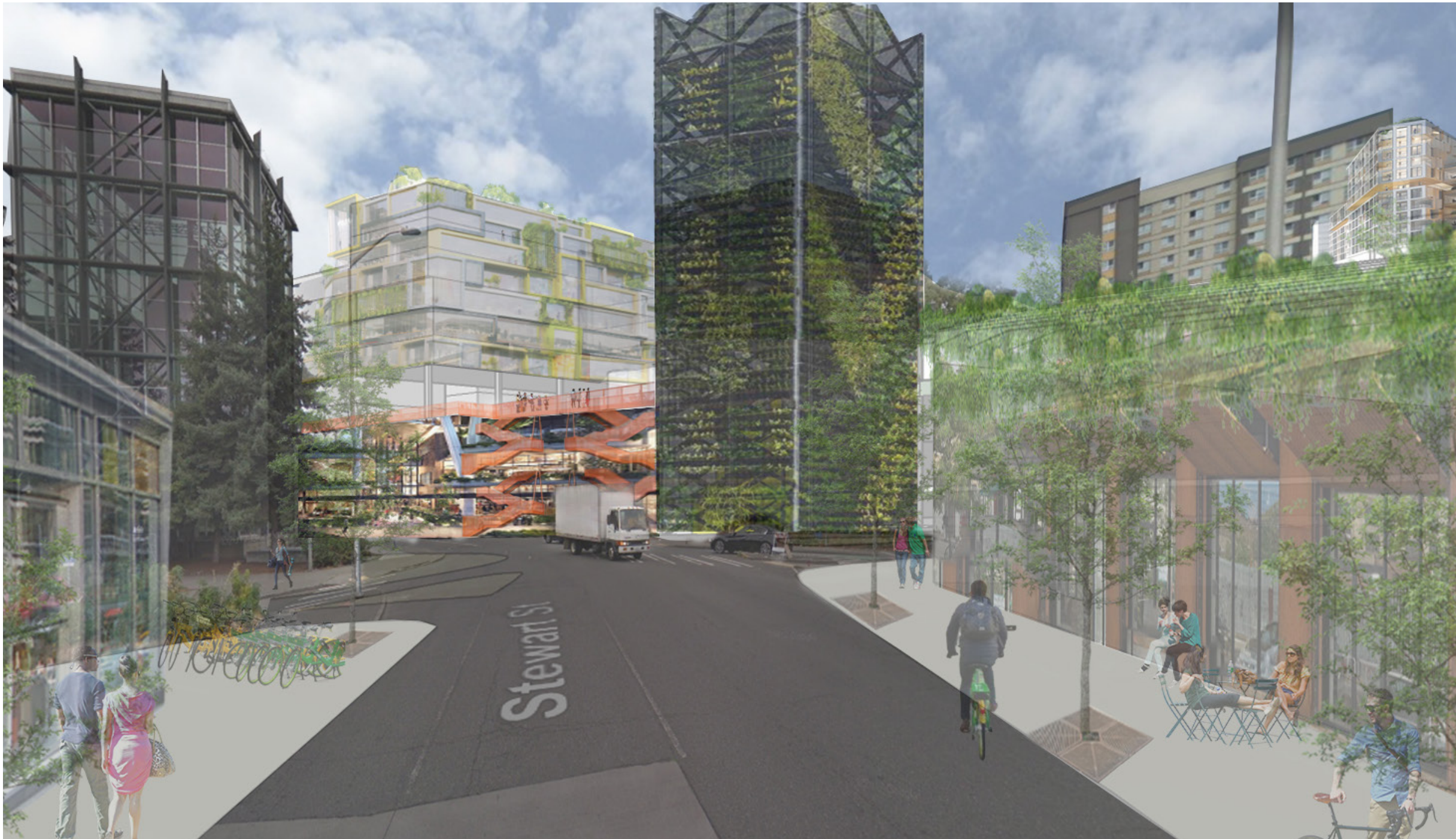
**NODE DESCRIPTION:** The north entry portal evokes the sectional qualities of natural occurring landforms and the striations in the geology that form them.

The edge of the cave also serves as a planted buffer for the housing beyond.





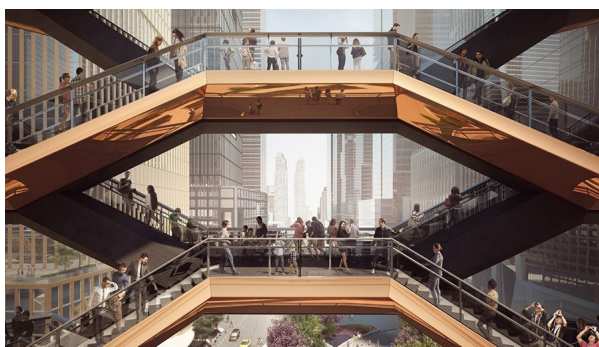
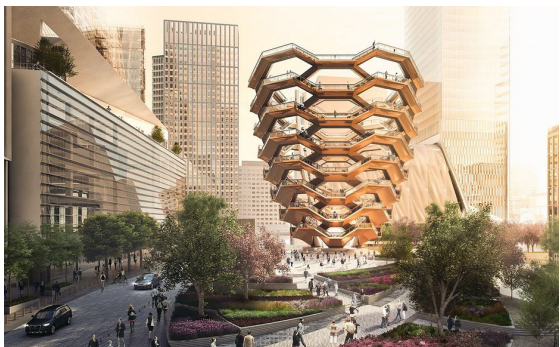
# WEST CIRCULATION STAIR | THE CRAG



**CRAG** /krag/:

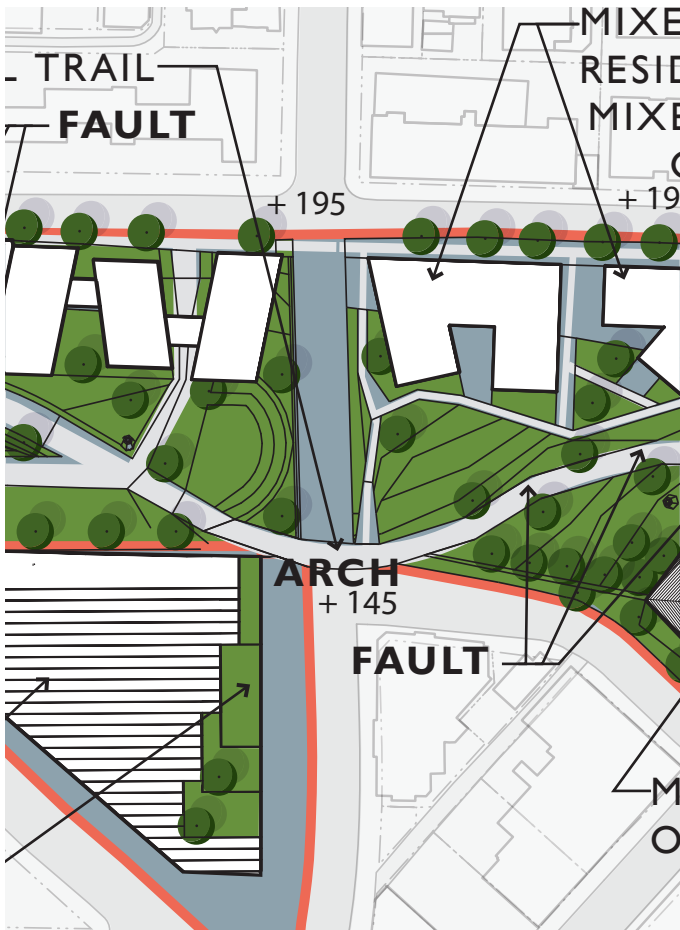
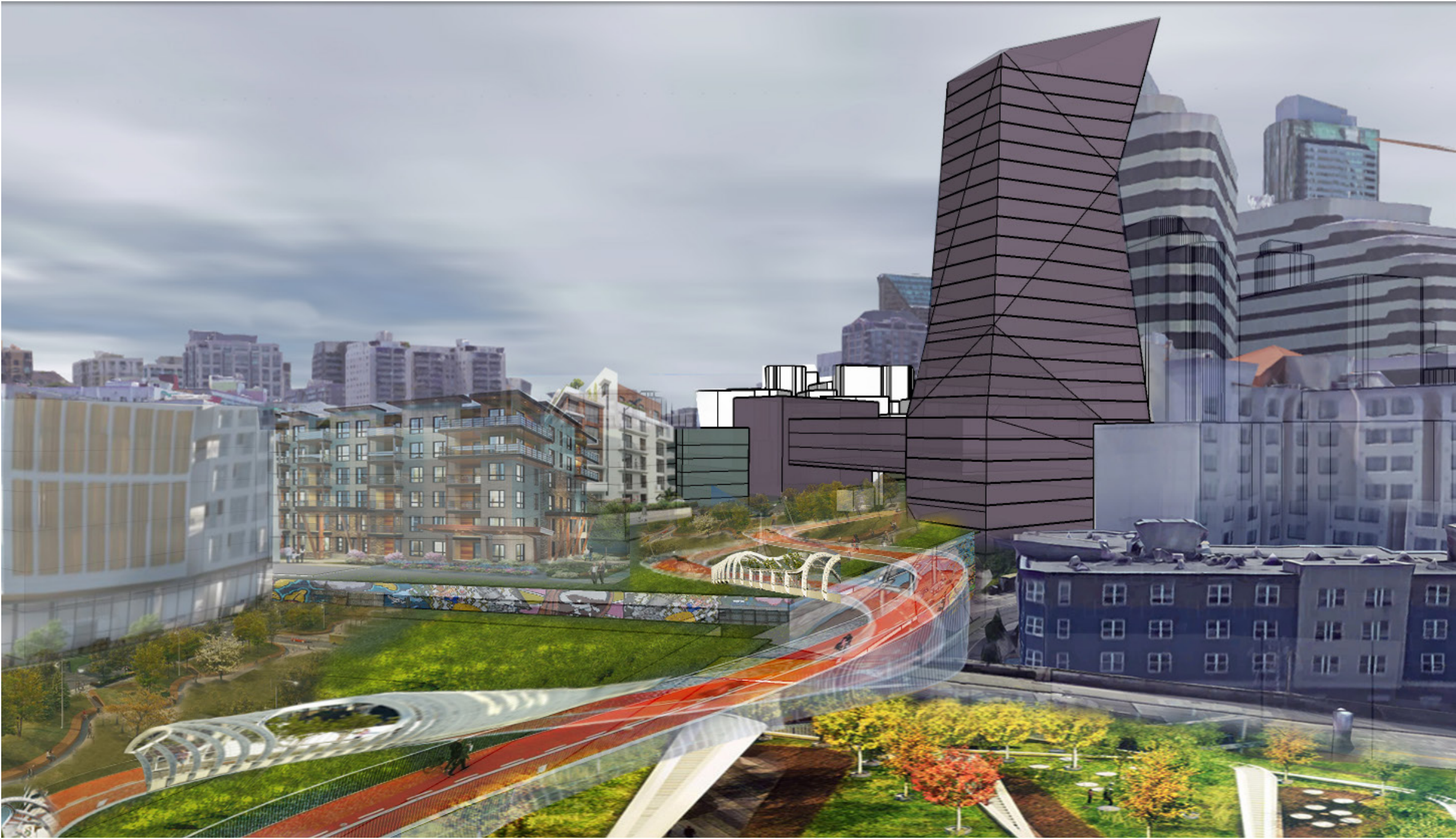
A crag is a rocky hill or mountain, generally isolated from other high ground. Craggs are formed when a glacier or ice sheet passes over an area that contains a particularly resistant rock formation. The force of the glacier erodes the surrounding softer material, leaving the rocky block protruding from the surrounding terrain.

**NODE DESCRIPTION:** The Crag marks the intersection of the two street grids and serves as the vertical transition to the lid via the feature stair and elevator. It is an opportunity to create a multipurpose pedestrian experience, with micro retail and a vertical urban garden for public use.





# DENNY BRIDGE | THE ARCH



## ARCH / ärCH/:

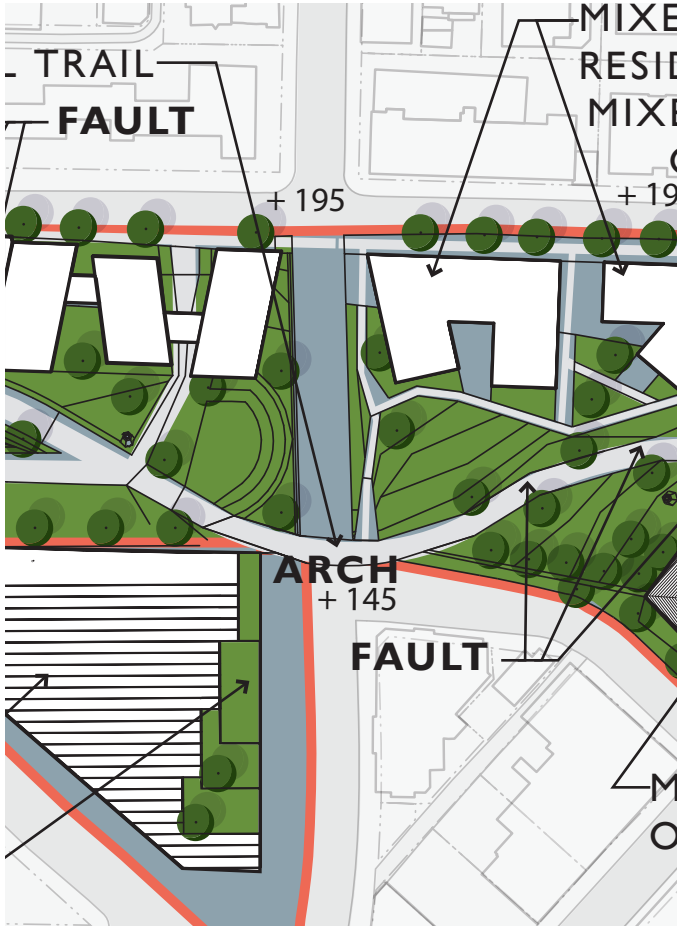
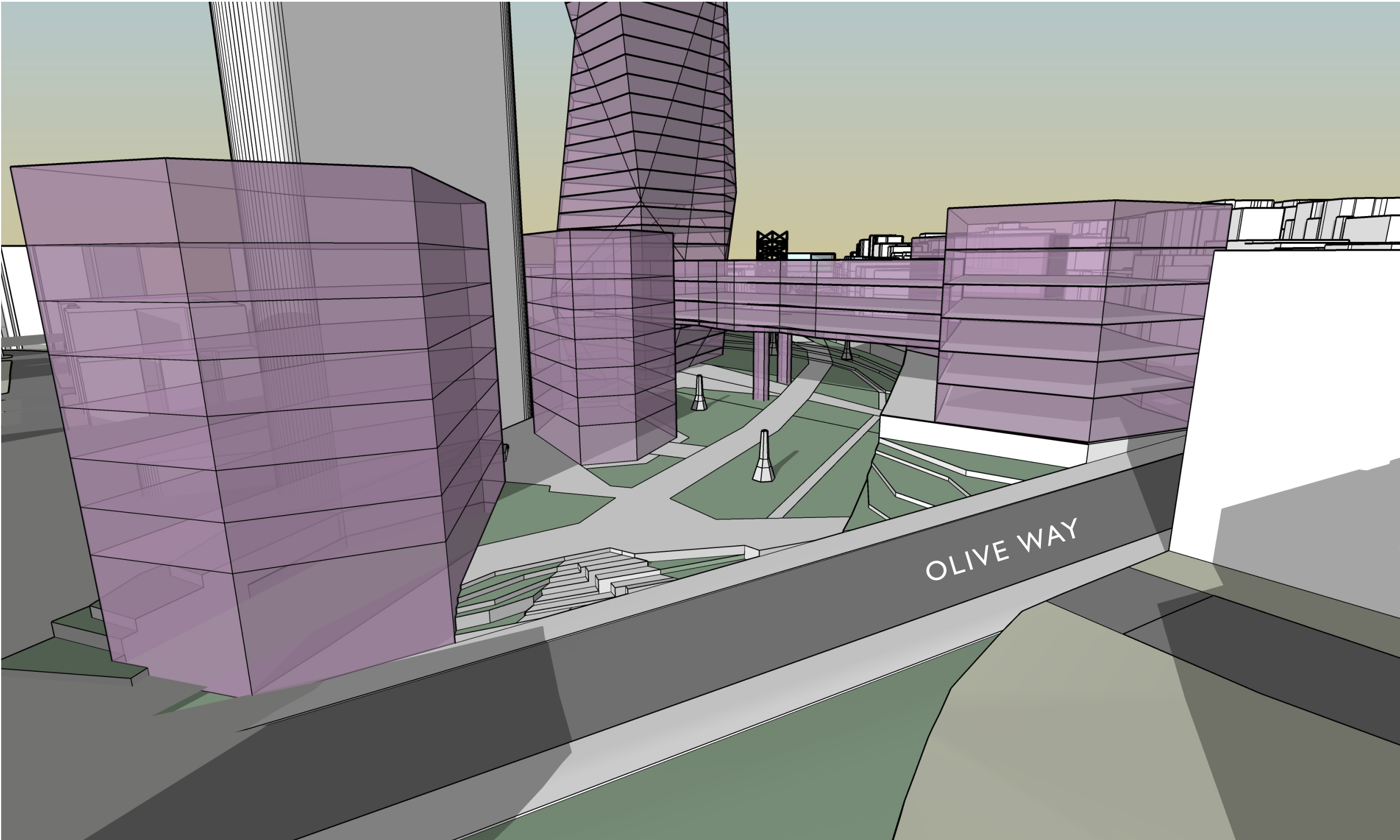
A natural arch, natural bridge, or (less commonly) rock arch is a natural rock formation where an arch has formed with an opening underneath.

**NODE DESCRIPTION:** The Arch serves as a link between the southern and northern halves of the site bisected by Denny Way. It curves out, like the prow of a ship and creates an outlook for views down Denny and to the Space Needle beyond.





# SOUTH PEDESTRIAN LINK | THE DELTA



**DELTA** /'deltə /:  
A triangular tract of sediment deposited at the mouth of a river, typically where it diverges into several outlets.

**NODE DESCRIPTION:** The delta is a confluence of pedestrians, bikes, and commerce, serving as the gateway to the north from the central site



