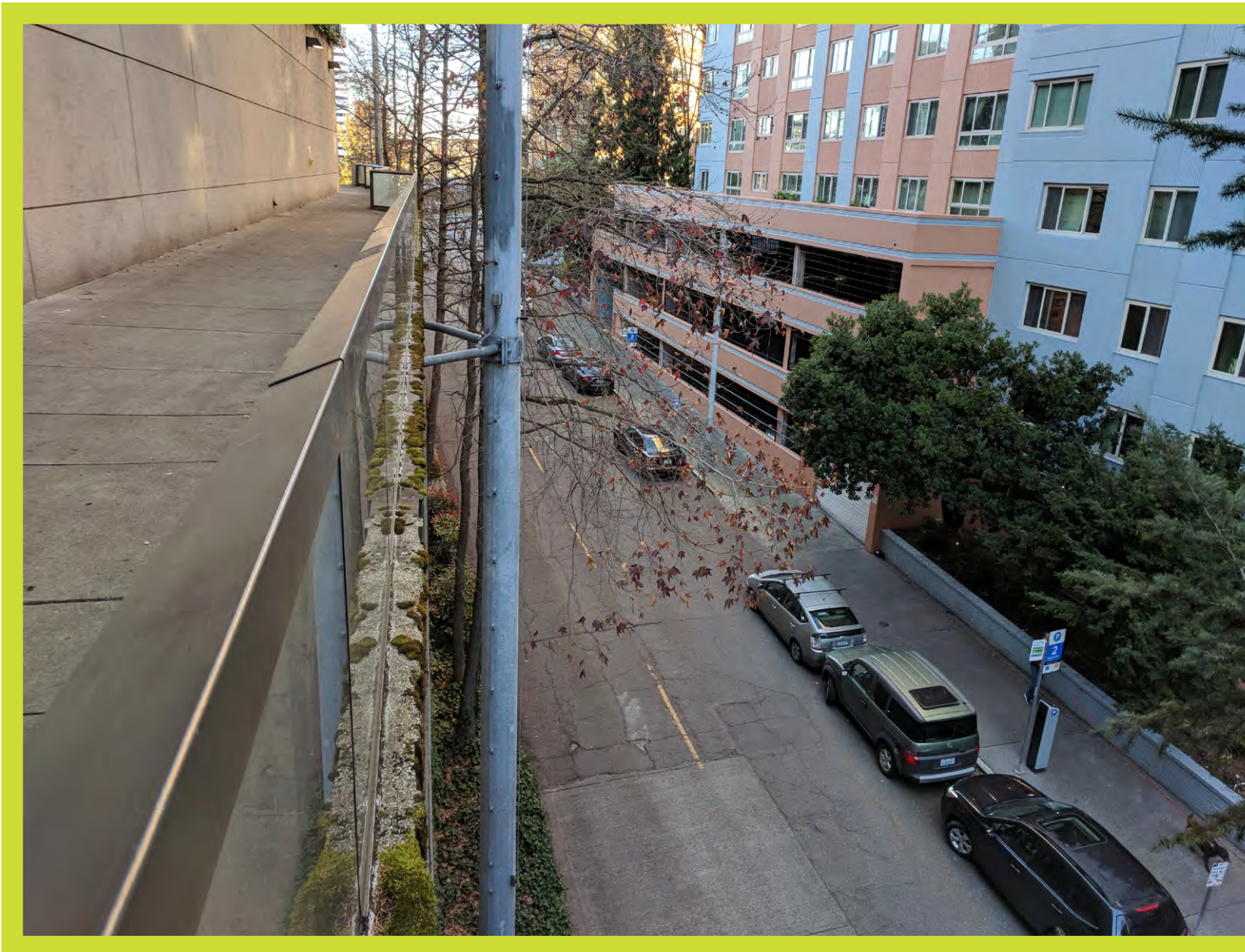




Clients: Alex Hudson
 Doug Holtom

Designers: Dylan Crawford
 Gina Kim
 Cormac Diggins
 Lyna Nget
 Juliet Vong
 Merit Oviir
 John Logan

the chute



looking north along hubbell place while standing atop the chute. both of the dark and narrow passages lack an air of safety.

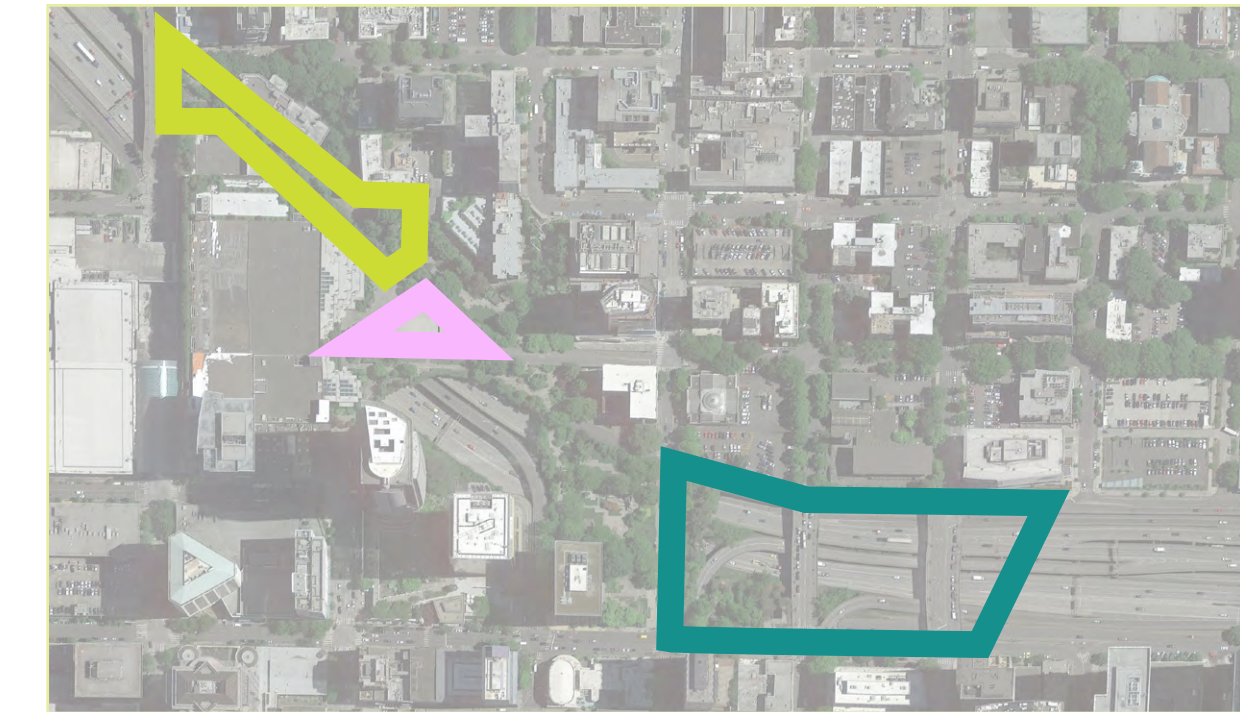


did you know that you are looking at a freeway park entrance on the corner of 9th avenue and hubbell place?



hard edges, blind corners, and brutal materials line the experience of the urban canyon.

Site Challenges



the destructive triangle



looking south along 8th avenue from the washington state convention center plaza. a divisive shape.



looking west over the triangle to 8th avenue. visitors have to navigate around countless nooks and bends before reaching it.

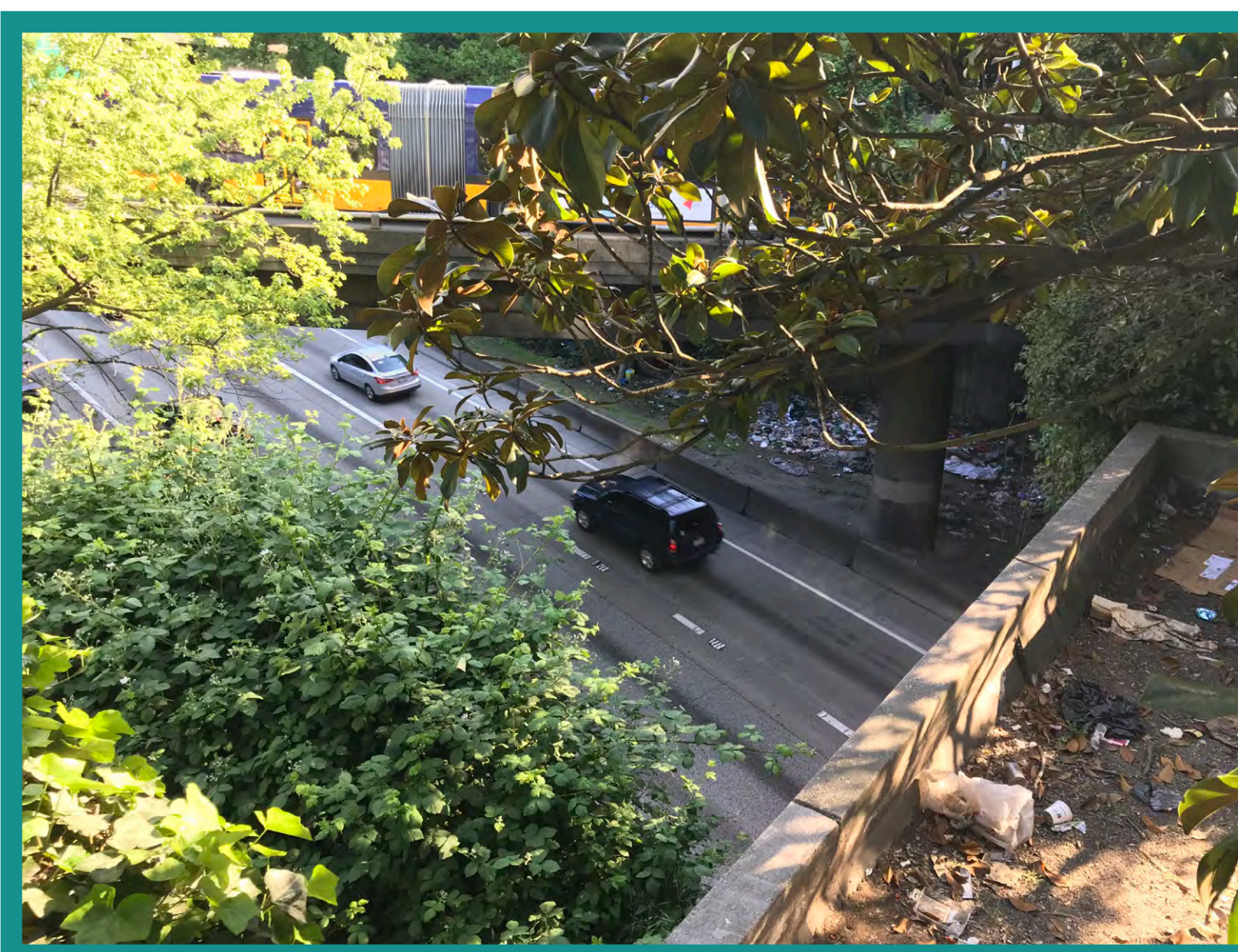


looking east at freeway park's sole outlet to 8th ave. the dark, narrow and disconnected character make this area challenge.

the i-5 scar



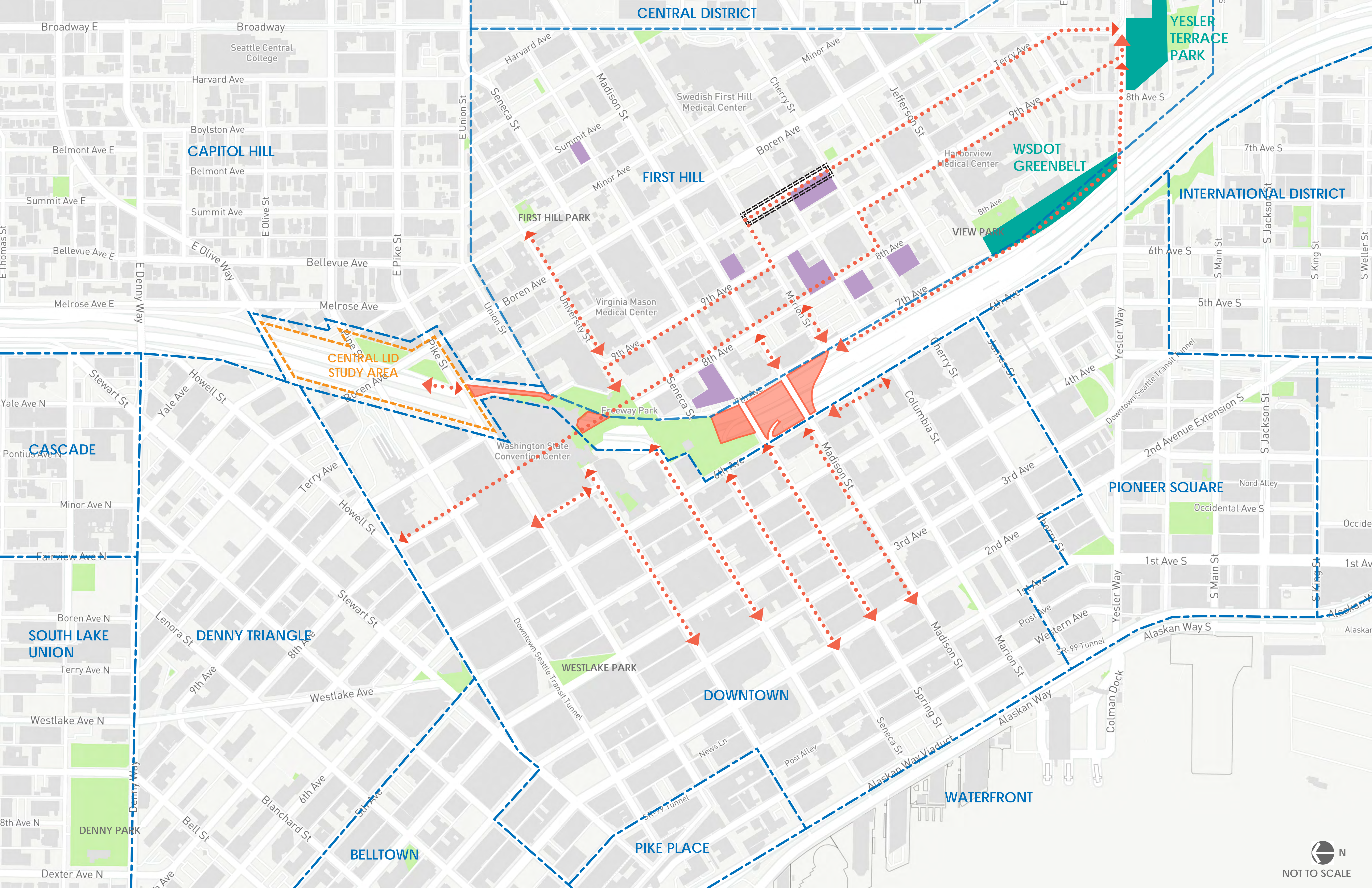
looking north along 6th avenue from madison. the existing character of the area makes clear that pedestrians are not a priority.



looking southwest down into the "shooting gallery" under freeway park and the southern (hidden) border of freeway park.



looking south along i-5 from spring street. i-5 is unusable to the immediate population living near it and creates a division between the first hill and downtown neighborhoods.



Diagram

External Connections

LEGEND

- | | | | | | |
|--|-----------------------------|--|---------------|--|---|
| | PROPOSED LID | | PROPOSED PARK | | PROPOSED RESIDENTIAL DEVELOPMENT NEAR LID |
| | CONNECTIONS TO PROPOSED LID | | EXISTING PARK | | PROPOSED WOONERF |

Design Principle 1:

Restitch the Network

Objectives:

- Connect to the larger circulation / transit system and new development South of site
- Activate edges of Freeway Park
- Determine streetscape language of First Hill vs. Downtown, tactically integrate into lid expansion

Design Principle 2:

Program the Fabric

Objectives:

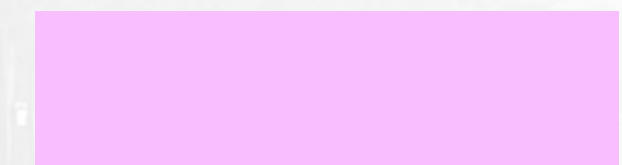
- Locate passive, active and playful spaces
- Add school or civic building
- Program site to accomplish overall lid sustainability goals

Existing vs. Proposed Lid

Existing Lid



Proposed Lid







Canopy Catwalk

Urban Woodland

Civic Green



Diagram

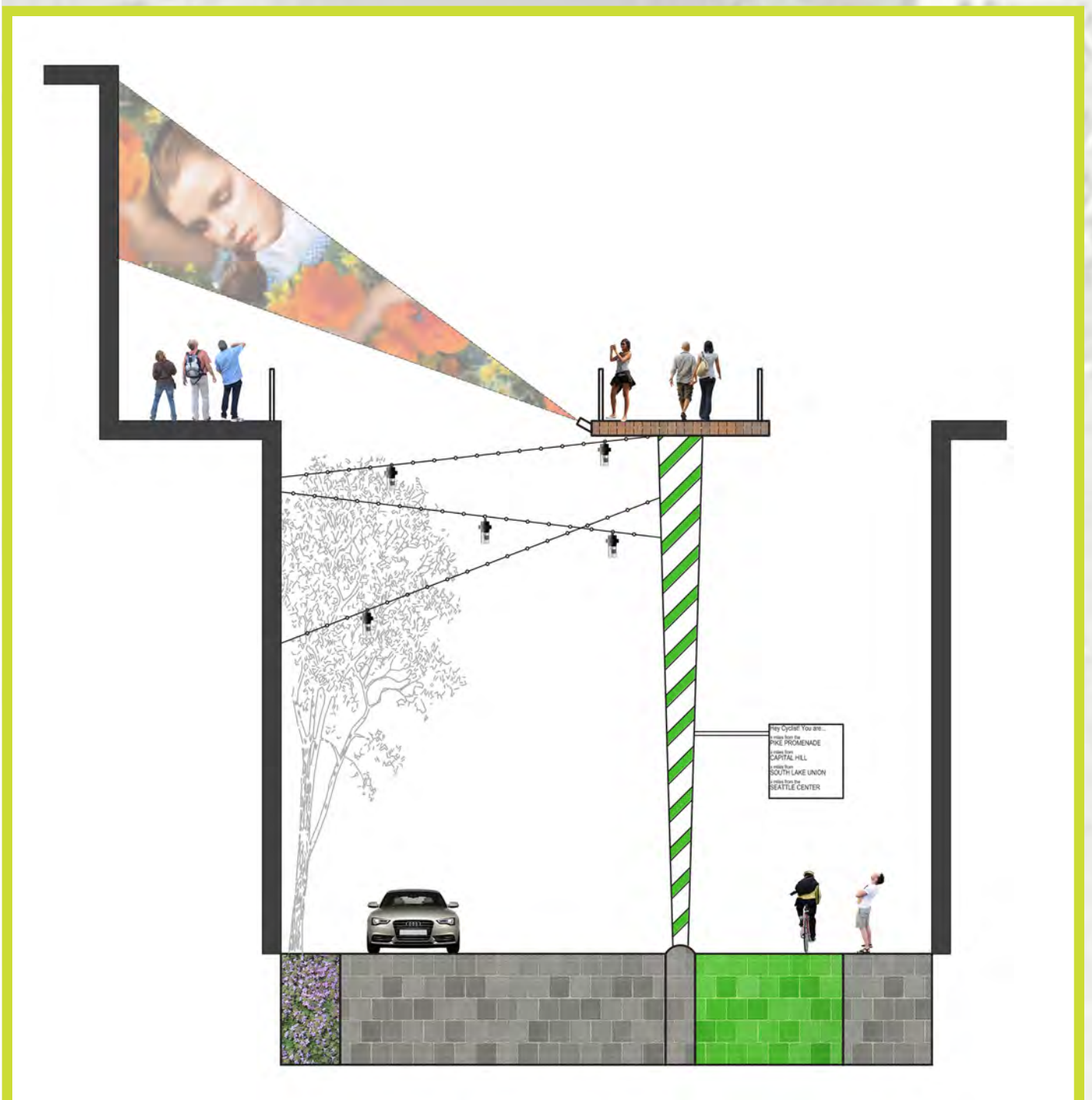
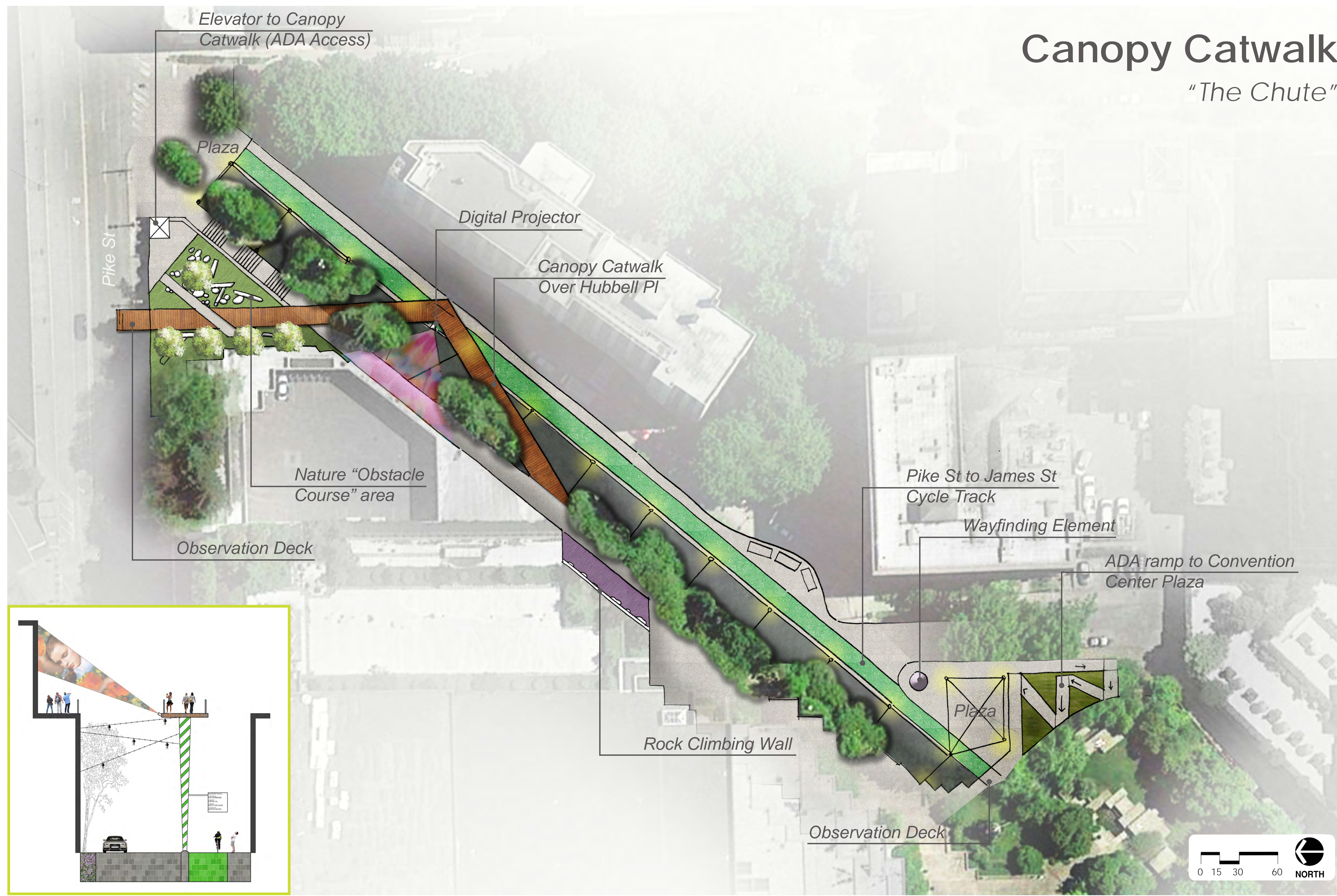
Internal Circulation

LEGEND

- PRIMARY PROPOSED CIRCULATION ROUTE
- SECONDARY PROPOSED CIRCULATION ROUTE
- PROPOSED BIKE CONNECTION FROM PIKE ST TO JAMES ST
- PROPOSED BIKE CONNECTION UNDER FREEWAY PARK
- ELEVATED STRUCTURE
- VEHICLE FLOW THROUGH SITE

Canopy Catwalk

"The Chute"



Urban Woodland

"Destructive Triangle"



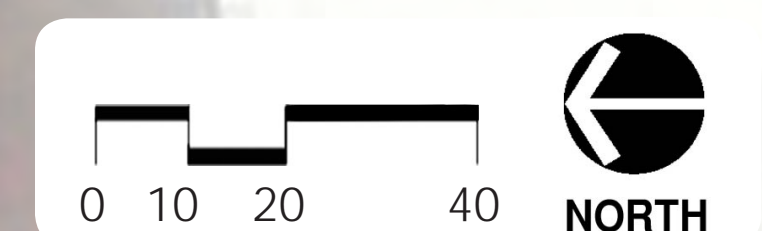
Lawn

Planting

8th Ave

Connection to Convention Center Plaza

Midblock Crossing



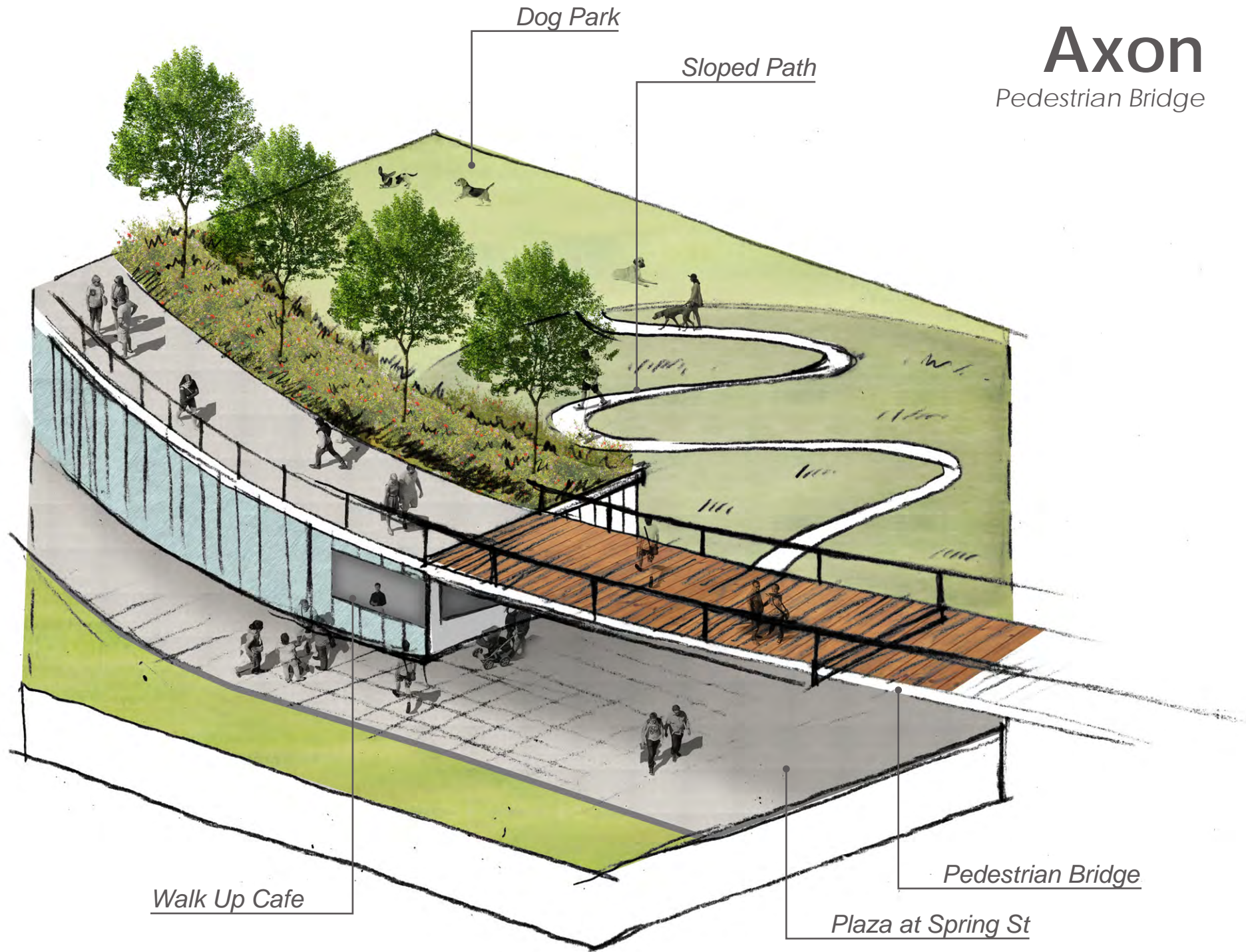
Civic Green

"Southern Scar"



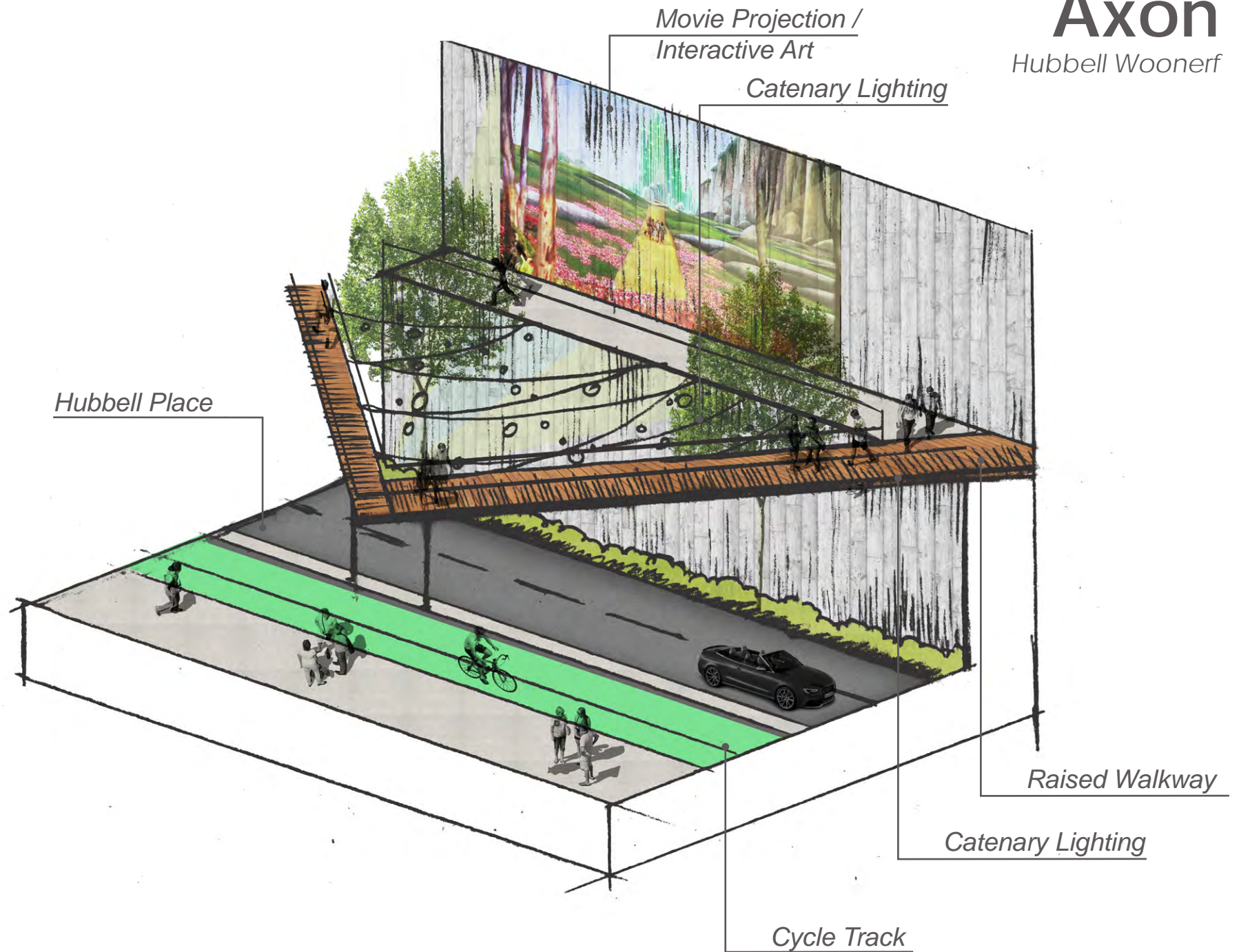
Axon

Pedestrian Bridge



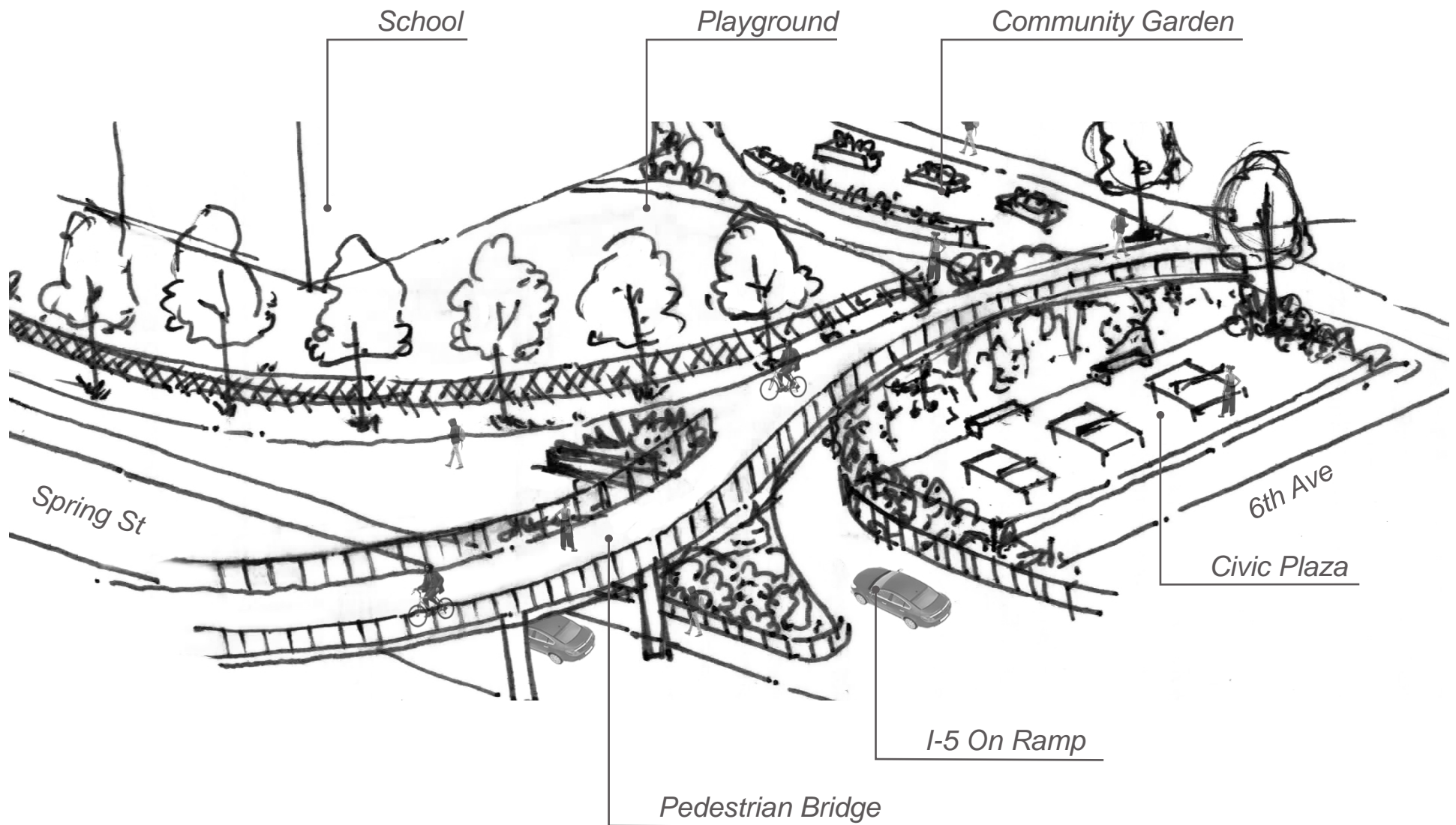
Axon

Hubbell Woonerf

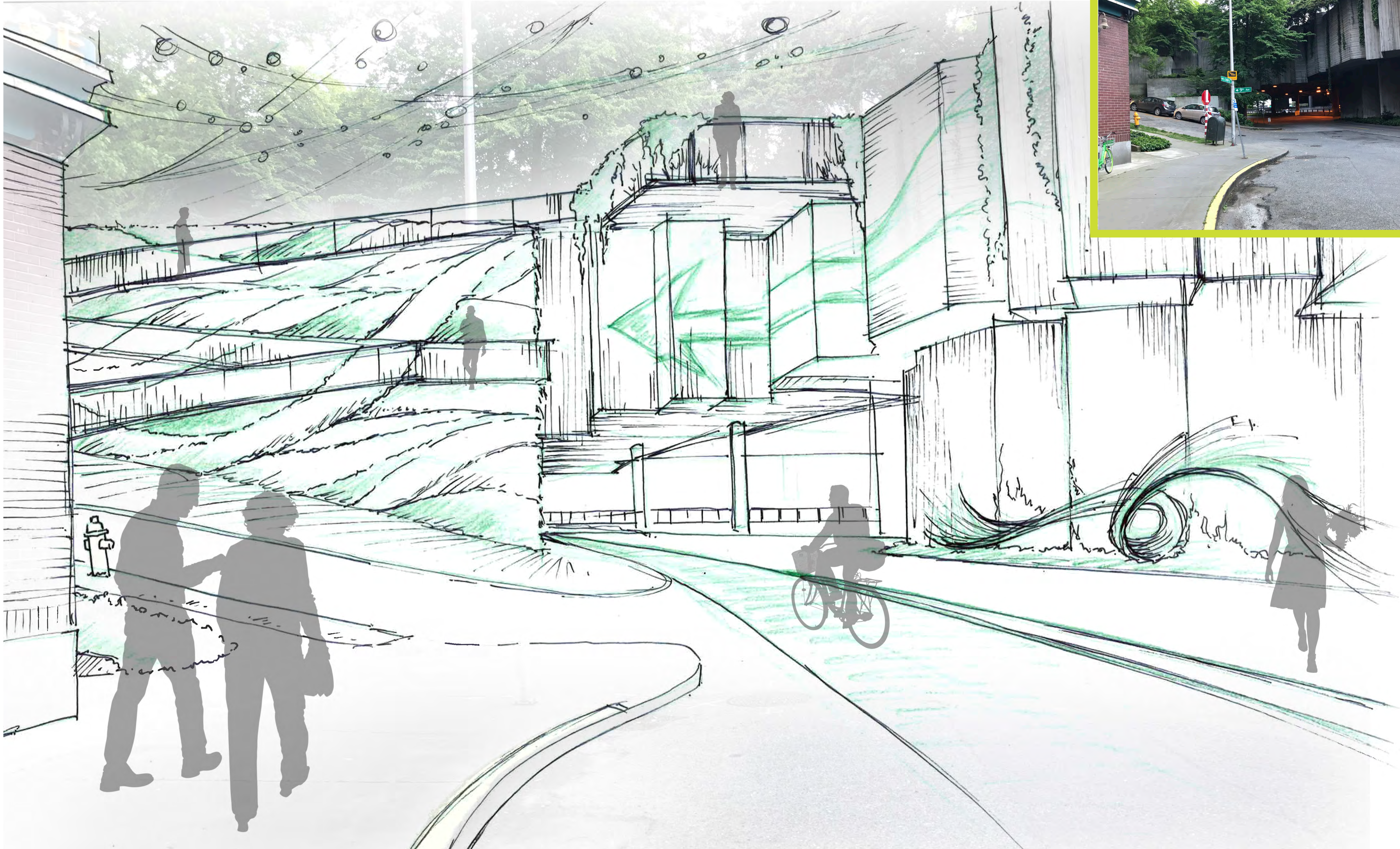


Axon

Block between Seneca St
and Spring St



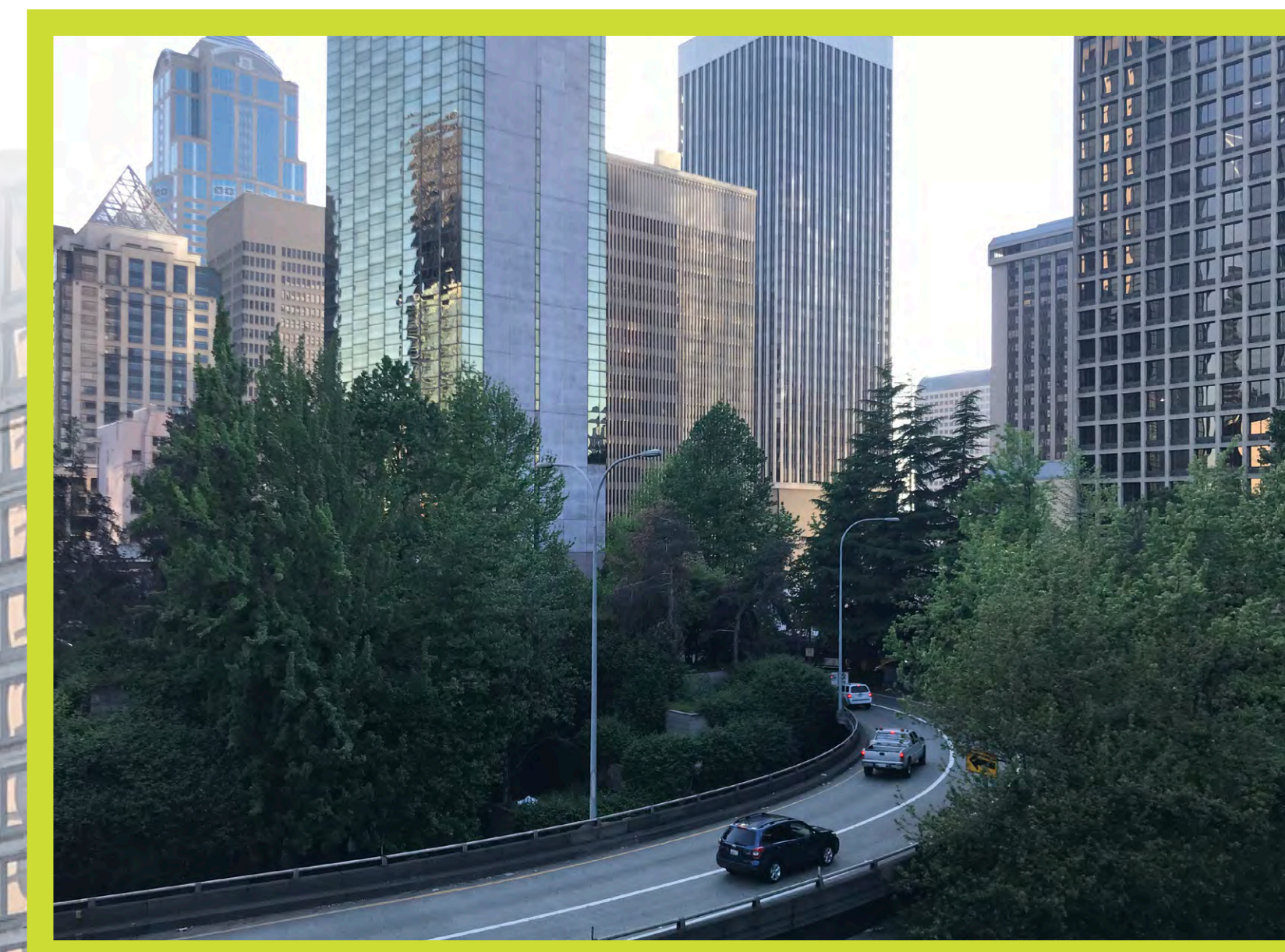
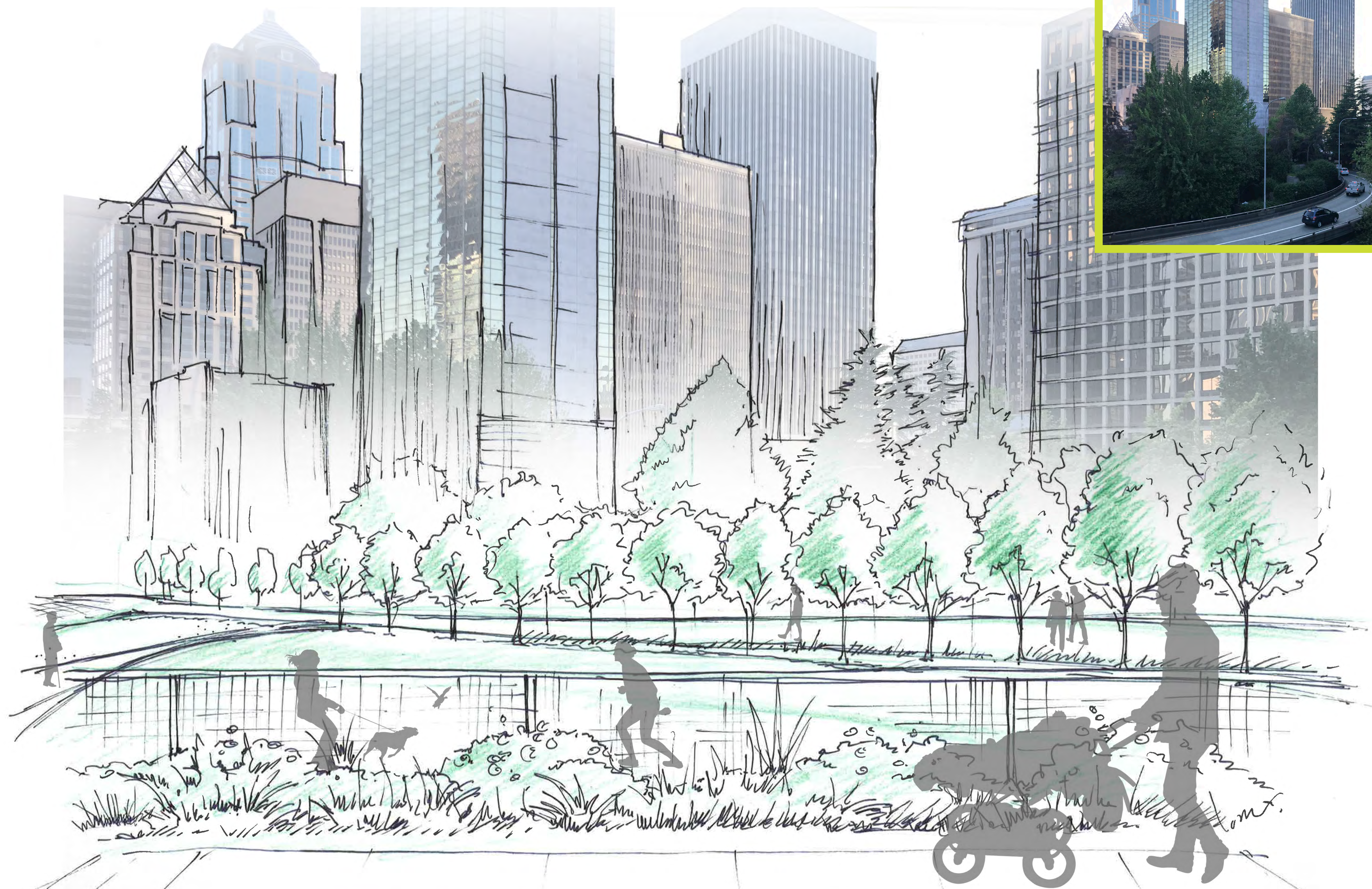
Canopy Catwalk



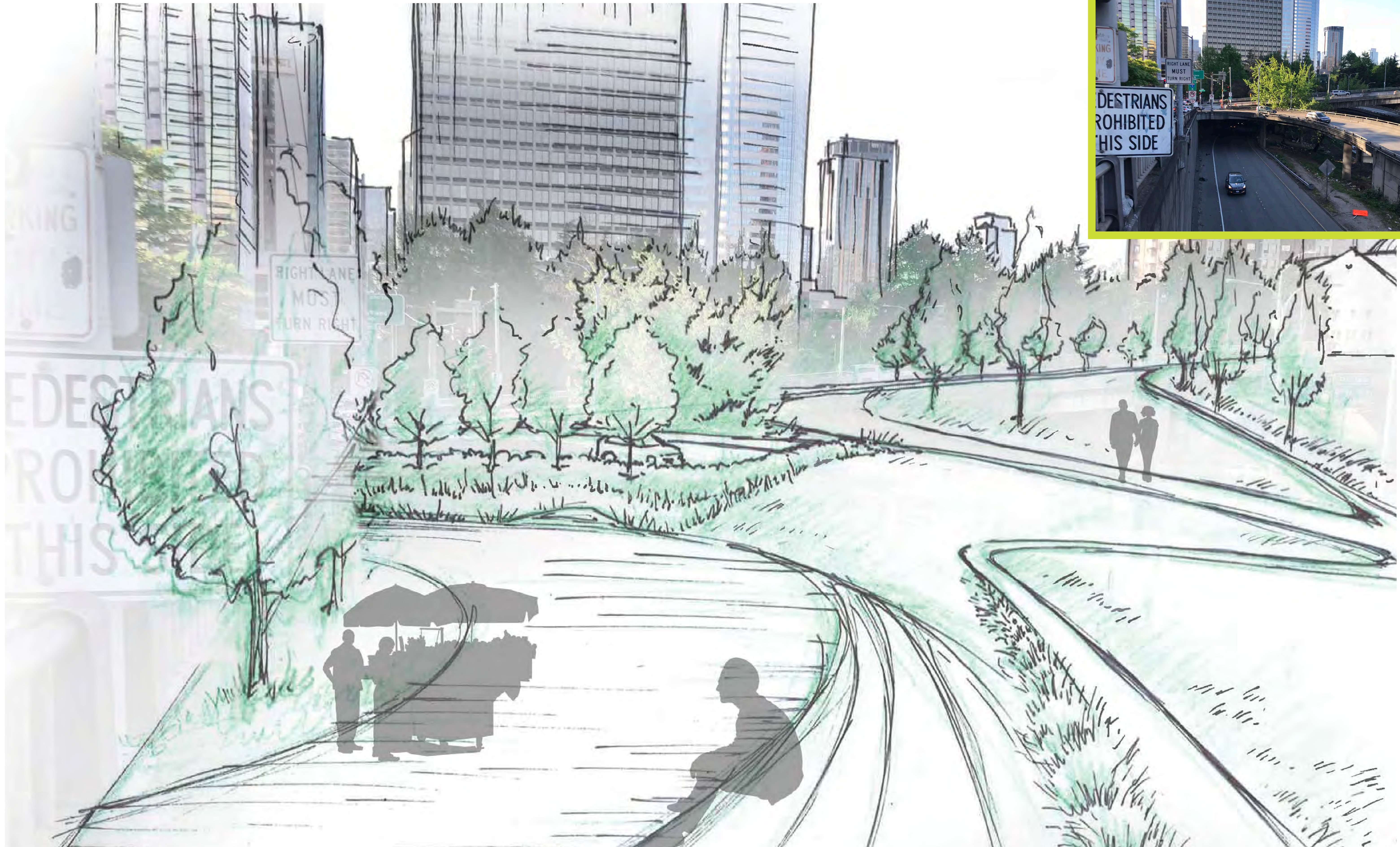
Urban Woodland



Civic Green - Promenade



Civic Green - Plaza



Civic Green - Vista

