



AMTRAK  
E Martinez Dr  
USE 4TH AVE S  
SAFECO FIELD  
CENTURYLINK FIELD  
USE AIRPORT WAY

# INTRODUCTION



FIRST HILL  
IMPROVEMENT ASSOCIATION

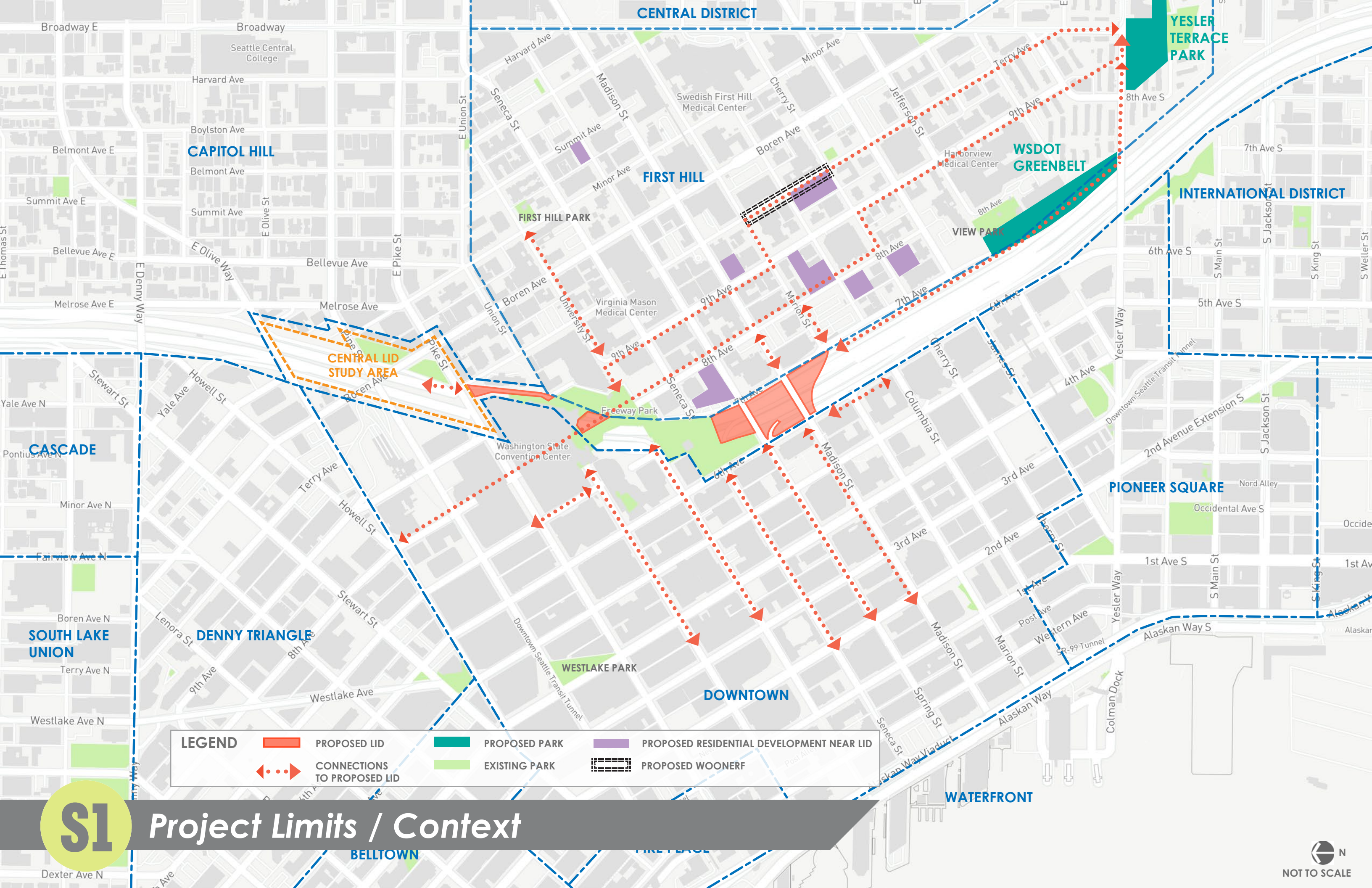
HNTB

HBB

CENTRAL  
HILLS  
TRIANGLE  
COLLABORATIVE









### Design Principle 1:

## Restitch the Network

#### Objectives:

- Connect to the larger circulation / transit system and new development South of site
- Activate edges of Freeway Park
- Determine streetscape language of First Hill vs. Downtown, tactically integrate into lid expansion

### Design Principle 2:

## Program the Fabric

#### Objectives:

- Locate passive, active and playful spaces
- Add school or civic building
- Program site to accomplish overall lid sustainability goals

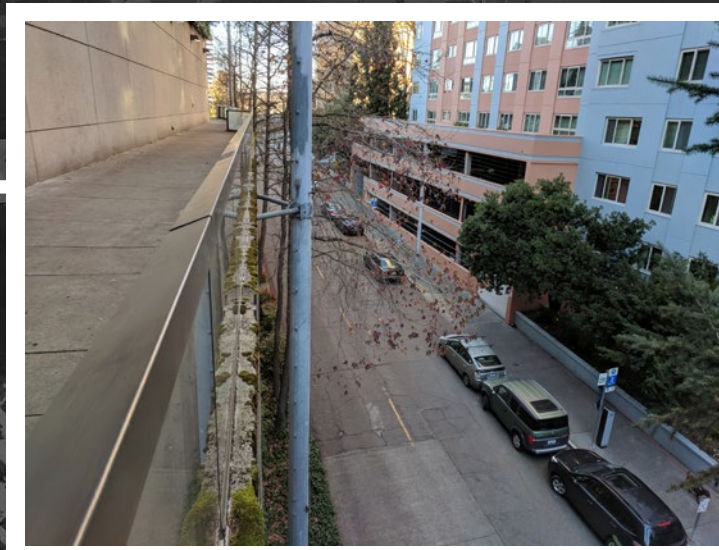




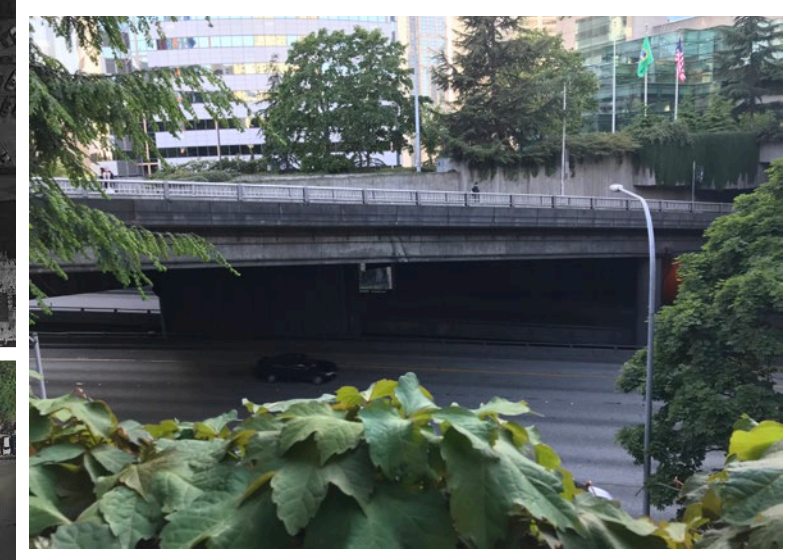
# Site Challenges and Opportunities



The Chute



The Destructive Triangle



# Site Challenges and Opportunities



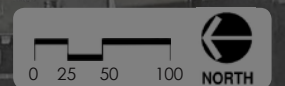
~~The Chute~~  
**Canopy Catwalk**

~~Destructive Triangle~~  
**Urban Woodland**

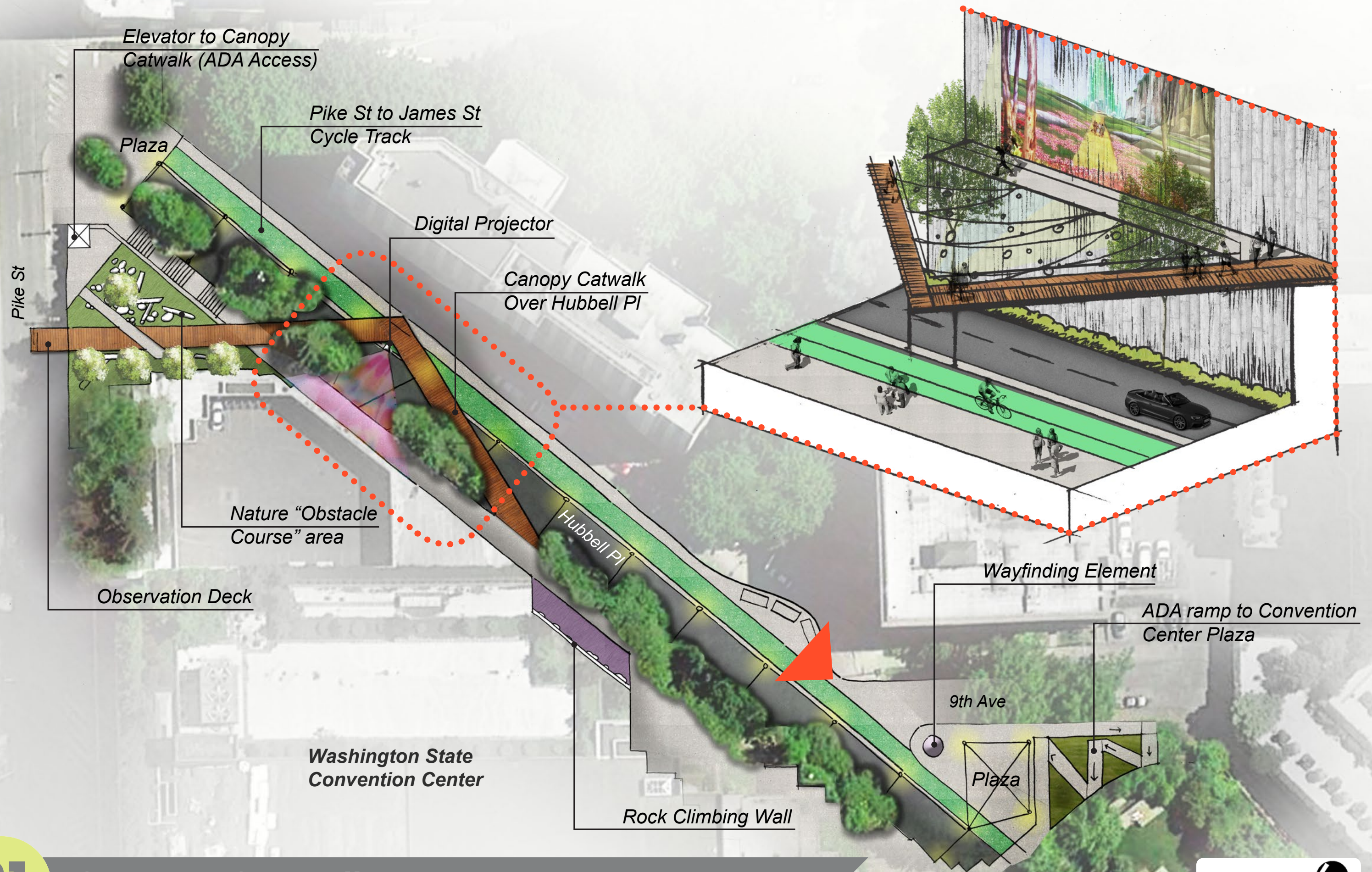
~~The Scar~~  
**Civic Green**



# The Freeway Commons











S1

Hidden Access to Freeway Park (Before)





**S1**

**Celebrated Access to Freeway Park (After)**





Washington State  
Convention Center

Hubbell Pl

9th Ave

Lawn

Planting

8th Ave

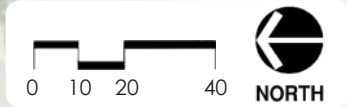
Connection to  
Convention  
Center Plaza

Midblock Crossing



# Urban Woodland

1-5







*Destructive Triangle (Before)*





Urban Woodland (After)

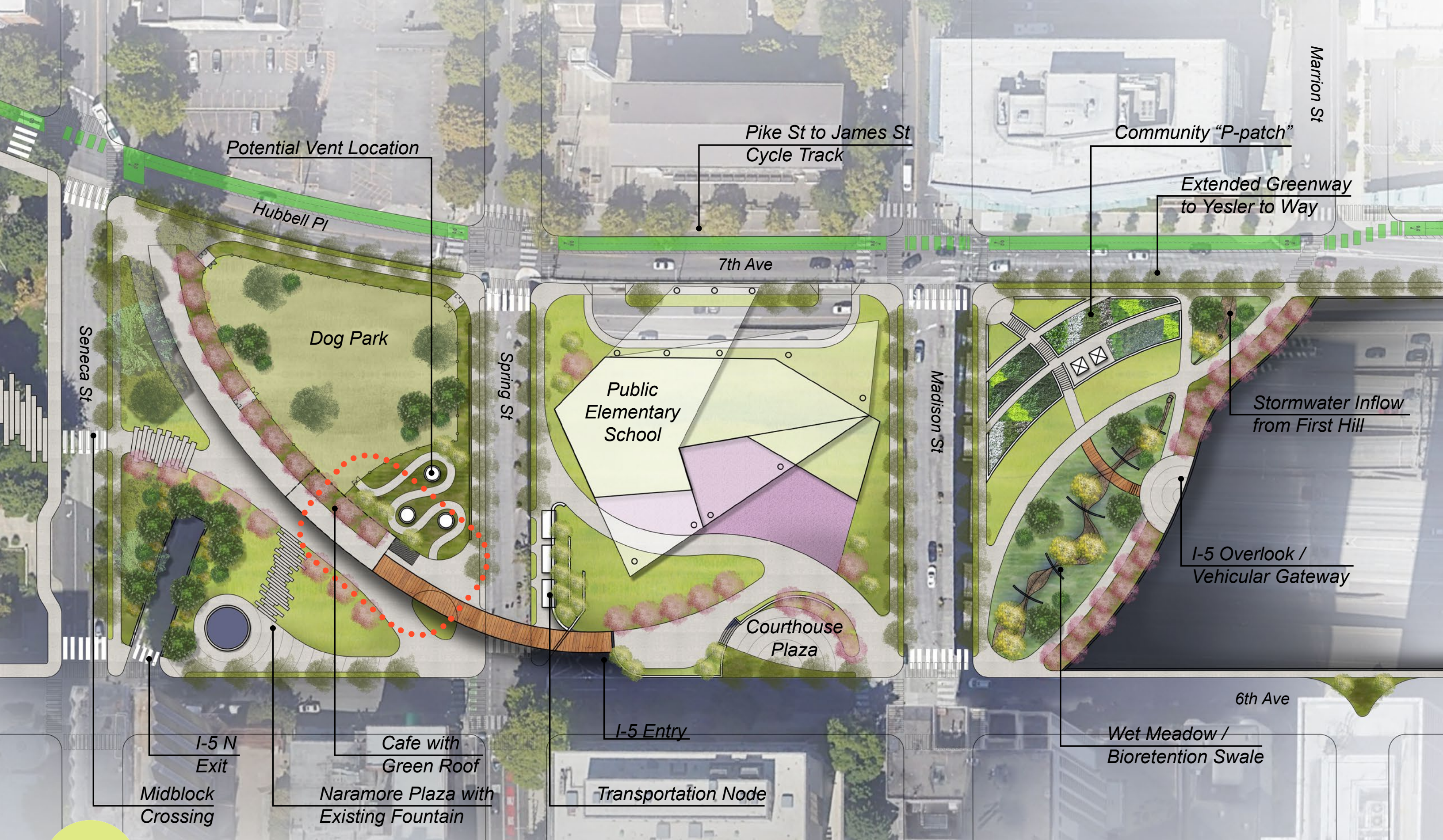




**S1**

*Improved Wayfinding*





Potential Vent Location

Hubbell Pl

Dog Park

Spring St

Public Elementary School

7th Ave

Pike St to James St Cycle Track

Madison St

Courthouse Plaza

I-5 Entry

I-5 N Exit

Midblock Crossing

Cafe with Green Roof

Naramore Plaza with Existing Fountain

Transportation Node

Community "P-patch"

Extended Greenway to Yesler to Way

Stormwater Inflow from First Hill

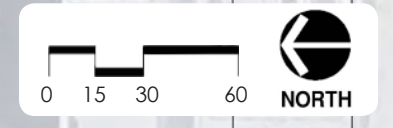
I-5 Overlook / Vehicular Gateway

6th Ave

Wet Meadow / Bioretention Swale



Civic Green



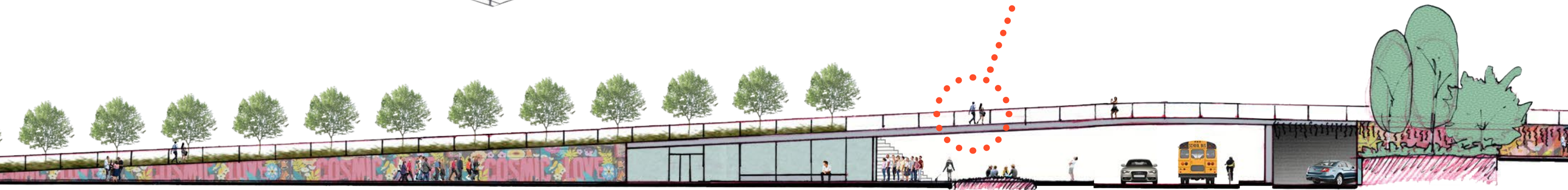
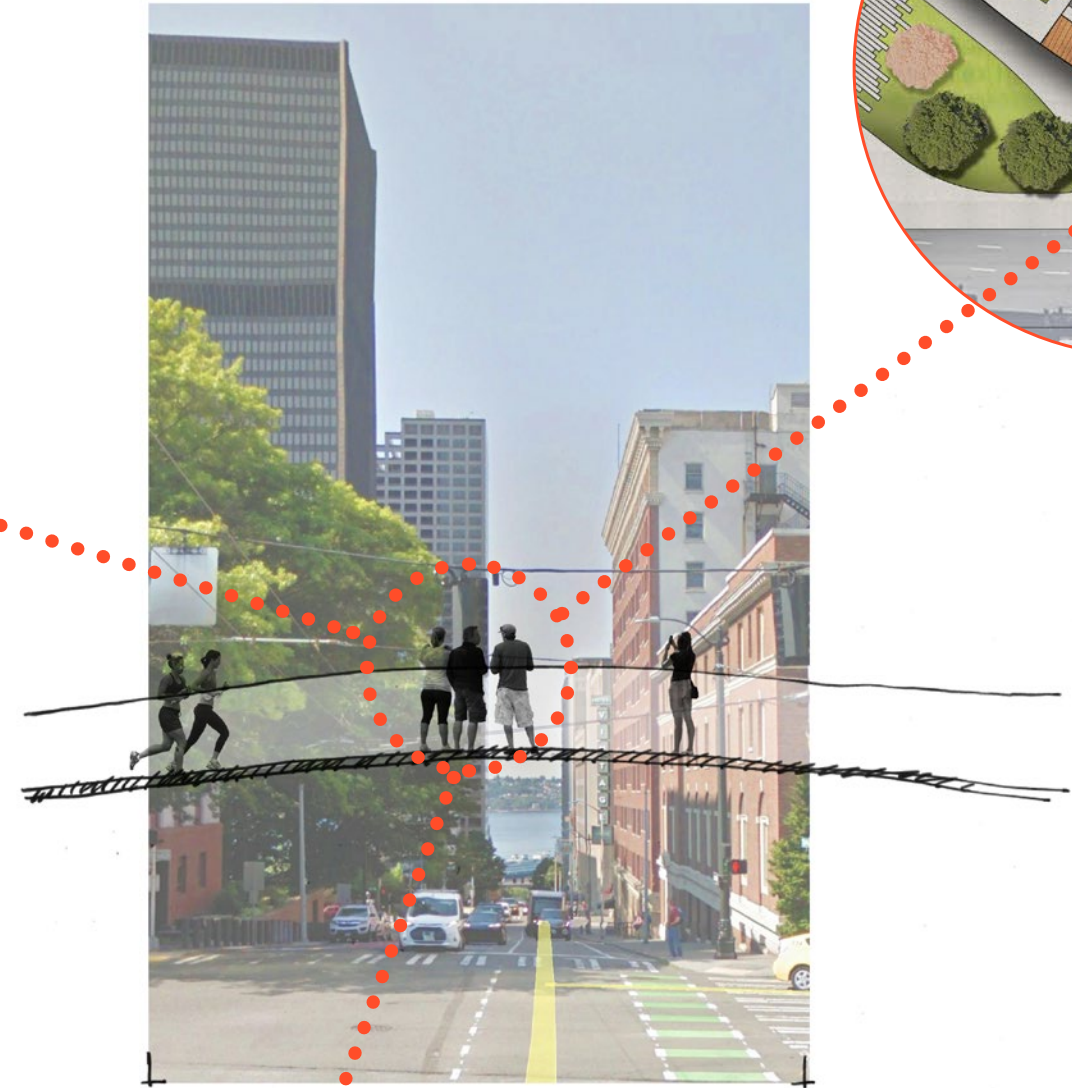
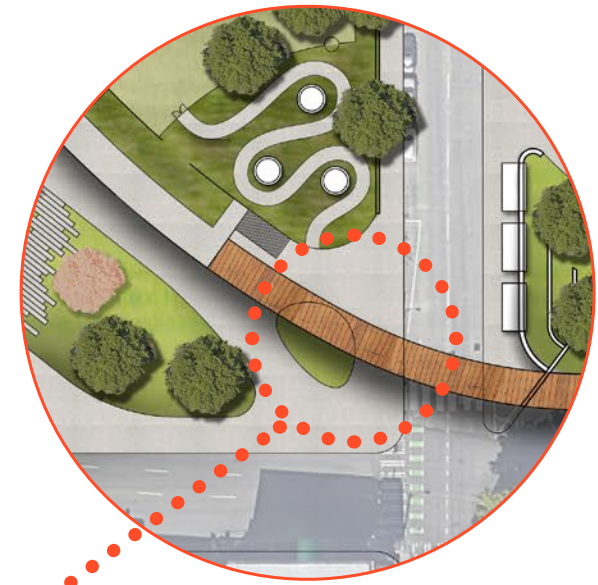


Dog Park

Freeway Ventilation

Walk-up cafe

Plaza at 6th and  
Spring St



**S1**

**“The Stitch” Bridge Profile**





## Looking North from 6th Avenue

*perspective provided by Studio 216*





## Looking South from Madison Street

perspective provided by Studio 216





FIRST HILL  
IMPROVEMENT ASSOCIATION

HNTB



*perspective provided by Studio 216*